



Combined Heat and Power (CHP)

A Guide to Submitting CHP Applications for Incentives in Rhode Island

Version: May 2016

Disclaimer: Please acquire and review the latest version of this document before submitting a project for pre-approval of an incentive.

Ongoing consultation with the National Grid during development of a project is essential to maximize the chances for receiving an incentive. There may be circumstances where additional requirements are necessary for the customer to receive an incentive. Similarly, there may be projects where some of the requirements listed herein can be waived by National Grid. Please note that for the reasons discussed within the document, an incentive pre-approval letter should be received prior to initiating the purchase of a CHP system. Projects which proceed prior to receiving an incentive pre-approval letter may be disqualified from receiving an incentive.

Table of Contents

PURPOSE OF THIS GUIDE	2
INTRODUCTION	2
WHAT IS CHP?	2
SUCCESSFUL CHP PROJECTS	3
Thermal Load is Key.....	3
Typical CHP System Types.....	4
CHP PROGRAM DESCRIPTION	5
Equipment Eligible for CHP Funding	5
Qualifying Criteria	7
Incentive Levels.....	9
INTERCONNECTION APPROVAL	11
CHP INCENTIVE APPLICATION PROCESS	11
Early Engagement With the Program Administrator.....	11
Authorization to Share Customer Data.....	12
CHP Application Form.....	12
Typical Approval Path.....	14
Allocation of Benefits.....	15
Co-Funding of Engineering Technical Assessments.....	15
Engineering Firms Contracted to Perform Technical Reviews for Program Administrators...	16
Post-Installation Requirements.....	16
Post-Operational Assessment.....	18
POST-INSTALLATION EVALUATION	19
APPENDIX	20
Attachment 1 - Typical CHP Approval Path.....	21
Attachment 2 - Combined Heat and Power Technical Assessments.....	22
Attachment 3 - Example of Hourly Data – Before and After CHP.....	23
Attachment 4 - Request for Hourly Electric Interval Data.....	24
Attachment 5 - Customer Authorization for Release of Data.....	25
Attachment 6 - Interval Data Request Fee Schedule.....	26
Attachment 7 - Meter specifications.....	27
Attachment 8 - Sample Minimum Requirements Document for CHP Projects.....	30
Attachment 9 - M&V Plan.....	36

Purpose of this Guide

The purpose of this document is to describe Combined Heat and Power Program (CHP) initiative including available incentives, the application process, requirements for post-installation assessment and regulatory evaluations for Rhode Island (RI). Complying with the recommendations of this Guide will increase the likelihood that a CHP project is eligible for incentives from National Grid.

The incentive levels for successful CHP projects are significant. However, the application process for receiving these incentives is fairly involved in order to achieve program objectives. CHP developers and engineering consultants who are assisting customers in preparing an incentive application should familiarize themselves with the overall process. The goal of this Guide is to shorten that learning curve and encourage the installation of CHP systems in RI.

Introduction

On June 21, 2012, an amendment to the Least Cost Procurement Statute, R.I.G.L. 39-1-27.7, to support the installation and investment in clean and efficient CHP was signed into law. The new CHP provision requires National Grid to develop a CHP plan that supports:

- 1) Economic development benefits in RI,
- 2) Energy and cost savings for customer,
- 3) Energy supply cost,
- 4) Greenhouse gas emissions standards and air quality benefits and
- 5) System reliability benefits.

CHP Projects are now eligible for funding as an electric energy efficiency measure. National Grid is responsible for administering incentives for CHP projects in RI

What is CHP?

CHP is the simultaneous generation of electric and thermal energy from a single fuel source such as natural gas. For example, when coupled with a generator a natural gas-fired engine produces electric energy. The engine also produces waste heat via engine exhaust gas as well as heat rejected through the radiator to keep the engine and the lubricant at the optimal temperature. This normally wasted heat can be captured to produce steam or hot water for space heating, domestic hot water, or manufacturing processes. The steam or hot water produced by the CHP unit will lower the amount of fuel otherwise used in the facility's boiler for these end uses. The overall efficiency of a CHP system can be as high as 80-85%, exceeding the efficiency of power generation, transmission and distribution system of a central power plant (typically 35 to 40% electric efficiency) combined with on-site production of thermal energy.

The increased efficiency of CHP mostly leads to a lower carbon footprint because of reduced greenhouse gas emissions.

Other significant benefits of the CHP system may include standby power capability at the facility and better control of power factor, depending on type of generator and controls used in the CHP system. If these capabilities are of interest, discuss options and costs with your CHP supplier.

In addition, federal, state and electric utility energy efficiency program incentives for CHP systems can significantly improve project economics.

Successful CHP Projects

In order to derive the maximum benefit from a CHP installation, thermal energy generated by the CHP unit should be fully utilized by the host facility. The best CHP applications are facilities with high annual hours of operation and continuous thermal load. Facilities in which electrical and thermal loads coincide to a large degree are ideal.

Examples of such applications include industrial processes that need heat and electricity during the same time period (particularly those with 24/7 operation), and commercial applications such as hotels, hospitals, nursing homes, schools, colleges, laundries, health facilities, and multi-unit apartments. Round-the-clock thermal and electrical loads are of key importance in allowing a return on the CHP capital investment within an acceptable amount of time.

Thermal Load is Key

Even the best CHP application marginally passes the Benefit Cost Ratio (BCR) test and requires rigorous examination to determine whether it meets the necessary requirements for receiving an incentive.

A successful CHP project typically utilizes nearly all of the thermal energy being produced by the system and uses a prime mover with an attractive heat rate and with minimal parasitic load (less than or equal to 5%). CHP projects with substantial thermal dumping of the load, high parasitic requirements, and few thermal following run hours are far less likely to achieve an acceptable BCR.

Use of thermal storage (especially for domestic hot water) to more evenly spread the thermal load over a greater number of hours may boost the BCR and increase the chances for being awarded an incentive. A reciprocating engine genset installation in which the electric and thermal outputs of the system can be utilized simultaneously within the facility for at least 5,000 hours per year has a good chance of satisfying the BCR test. There are projects with more than 5,000 hours that have failed the test due to excessive thermal dumping, resulting in less efficient operation, while other ones have passed with fewer than 5,000 hours, due to better overall efficiency.

Projects using small combustion turbines or micro turbines usually require substantially more than 5,000 hours, since these systems are typically more expensive than reciprocating engines and have a lower electrical efficiency. However, maintenance costs are typically lower for turbines than reciprocating engines which provide some offset to the higher installed cost and lower turbine electrical efficiency.

It is unlikely that a building with minimal summertime thermal use would pass the BCR test as it would not have enough run hours to justify the capital expenditure.

Care should be taken not to propose an oversized system. An oversized system will cost more to install than a properly sized system and will result in a reduced number of equivalent full load operating hours compared to a correctly sized system. This will substantially reduce the likelihood of the project going forward (and will also reduce the likelihood of passing the BCR test) since the oversized unit presents more financial risk.

Typical CHP System Types

The table below compares different CHP prime mover types and feasibility considerations. These are general comments which an application with special circumstances may disprove.

PRIME-MOVER	REMARKS
Reciprocating engine generator	Requires gas, i.e. natural, propane or landfill or #2-fuel oil. Highest electric conversion efficiency; lower installed cost; higher maintenance cost. Life expectancy is greater for larger units.
Gas turbine generator	Requires gas, i.e. natural, propane, landfill or #2-fuel oil. Higher installed cost but lower maintenance cost. Booster compressor increases parasitic load which reduces net CHP kWh production. Potential use of a duct burner for increased thermal efficiency and thermal production.
Microturbine generator	Requires gas, i.e. natural, propane or landfill. Booster compressor increases parasitic load which reduces net CHP kWh production; higher installed cost but lower maintenance cost.
Back pressure (BP) steam turbine	Applicable only in high pressure steam systems. Steam systems using pressure reducing valves with significant flow and pressure drop should consider BP turbines. Lowest installed cost as boiler is usually in place. No or minor emissions permit required. Lower maintenance cost.
Fuel cell	Requires gas, i.e. natural, propane or landfill. Least efficient; low grade waste heat is available; high equipment cost

CHP Program Description

Equipment Eligible for CHP Funding

Generally, equipment qualifying for CHP incentives includes reciprocating engines, gas turbines (also called combustion turbines), and back pressure steam turbines. A CHP system can use any type of fuel.

Retrofit and New Construction

It is important to note that for the purposes of receiving an incentive under this program, a CHP system must directly produce electricity and not simply offset the use of electricity. An example of equipment that would not qualify is a gas-fired engine directly coupled to a compressor, which indirectly reduces electricity by reducing or eliminating the use of a motor to drive that compressor. The application for an incentive requires submission of a completed Retrofit or New Construction Application form

To be eligible for an incentive, CHP equipment must have a minimum of 55% combined electric and thermal efficiency with fuel input being expressed on a higher heating value (HHV) basis. However, a higher incentive will be offered for CHP equipment that has a combined electric and thermal efficiency equal to or greater than 60%. High system efficiency is encouraged in order to shorten payback period, increase societal benefits, and improve the BCR for incentive eligibility discussed below.

For conventional CHP without refrigeration or cooling

- a. Electrical Efficiency = Annual kwh (net) X 3,412 Btu/kWh ÷ Fuel Input (Btu/Hr)_{HHV}
- b. Thermal Efficiency = Btu/hr useful thermal energy ÷ Fuel Input (Btu/Hr)_{HHV}
- c. Combined Efficiency = a + b

For Trigeneration using absorbers

- a. Electrical Efficiency = (Annual kwh (net) + (Annual Ton-hours*kW/ton for electric chillers displaced)) X 3,412 Btu/kWh) ÷ Fuel Input (Btu/Hr)_{HHV}
- b. Thermal Efficiency = Btu/hr useful thermal energy for heating only ÷ Fuel Input (Btu/Hr)_{HHV}
- c. Combined Efficiency = a + b

Please note that many CHP engine manufacturers list their rated natural gas fuel input on a lower heating value (LHV) basis. For natural gas, HHV Fuel Input = current conversion factor. (see current rates) *LHV Fuel Input. Other fuel types have different conversion factors.

In order to qualify for Federal Tax Credits and Federal Grants¹, a proposed CHP system has to have a minimum 60% annual combined electric and thermal efficiency with fuel input expressed on a HHV basis.

Other Eligible CHP System Applications

CHP System Replacement or Expansion Having Received an Incentive: Replacement of an existing operable CHP system with remaining measure life or a capacity expansion of an existing CHP system with a remaining measure life may be eligible for incentives. Provided the proposed system passes the BCR test, the incentive calculation will be based on the following steps:

- a. Determine the salvage value of the existing unit;
- b. Determine the cost of installing the new unit;
- c. Determine the incremental cost (cost of installing the new unit minus salvage value of the existing unit);
- d. Determine the incremental annual kWh generation, incremental kW during winter and summer peak and off-peak periods², incremental thermal savings, and incremental fuel usage;
- e. Submit information for National Grid to run BCR model;
- f. Incentive will be paid on the new unit size minus any incentive paid for the original unit

Replacement of "End of Life" CHP System: Customers with an existing CHP system exceeding the accepted measure life, listed in the table below, and has not received an energy efficiency program incentive for the existing unit may be eligible for incentives. Provide the following:

- a. Describe the base case scenario, i.e. typically a non-operating CHP system;
- b. Quantify the base case cost of the necessary mechanical and electrical system infrastructure upgrades to meet the facility electric and thermal needs;
- c. For the proposed case, quantify the cost of the CHP system and follow the Custom Measure Application Process documentation requirements and provide all information

CHP System Measure Life³

¹ The applicant, not National Grid, is solely responsible to determine applicable requirements pertaining to tax credits, grants, latest rules and regulations.

² Winter and summer peak and off-peak periods as defined on page 4 of the Custom Application form

³ CHP System Measure Life includes balance of plant, i.e. equipment required to enable the recovery and use of waste heat.

Technology	Measure life (years)
Fuel Cell (FC)	5
IC small ≤ 200 KW * (IC-small)	17
IC large > 200 KW * (IC-large)	20
Micro Turbine (MT)	15
Gas Turbine (GT) < 500 KW	17
GT (gas turbine) 500 KW+	20
Steam Turbine (ST)	25

* Size is individual machine size, not overall system. For example: a project banking three 100 KW machines together should be assigned 17 year life for small systems

Qualifying Criteria

Following is a discussion of the kinds of issues that should be considered during initial planning stages for a CHP project.

Benefit/Cost Analysis: The CHP equipment must undergo a utility Benefit/Cost Analysis utilizing a methodology prescribed by the RI PUC. This methodology considers:

- The power (kW) output of the CHP system (net of any incremental parasitic load to operate the CHP system's auxiliary equipment),
- Annual net kWh generated,
- Installed cost of the equipment,
- Ongoing annual maintenance costs,
- Quantity of fuel and type of fuel being fired in the CHP system as well as fuel displaced by the CHP system,
- Timing of the power production, such as winter/summer and peak versus off-peak as defined in the Custom Project application.

Above are the inputs to the Benefit/Cost model used to determine the BCR. In order to receive incentive funding for CHP projects, the lifetime benefits must exceed the lifetime cost. In other words, the BCR must be greater than or equal to 1.0.

Benefit/Cost Analysis vs. ROI/Payback: It is important to understand that the BCR model used to determine whether a project is eligible for incentive funding is a different methodology than the analysis a customer would perform to determine whether project economics are attractive enough to move forward. Some of the key differences are as follows:

- The utility BCR model utilizes marginal values of fuel and electricity as well as the value of deferred transmission and distribution. Also, the value of capacity used in the BCR model is determined according to the ISO-New England Peak Period definitions.
- In contrast, a customer's economic model will utilize retail costs for fuel and electric power. Also, a customer will consider the value of avoided electric demand charges determined according to the periods defined in the rate tariffs (instead of the ISO-NE period definitions).

- c. O&M costs annualized over the life of the CHP unit are also included in the BCR calculations.

The federal Modified Accelerated Cost Recovery System corporate depreciation is not included in the BCR inputs.

As there are differences in the economic modeling methodology between the two perspectives, a CHP project may make economic sense for the customer, but it may fail the BCR test and therefore not be eligible for an incentive.

Determining CHP System Cost: The total cost paid for the CHP system, subtracting any federal credits or grants shall be used as the input into the BCR model. Qualifying ***Federal Tax Credits and Federal Grants*** which effectively reduce the installed cost of the CHP system are allowed to be included as a reduction in installed cost of the CHP system for the purpose of calculating BCR. Sufficient documentation will need to be provided for the availability of these grants or tax credits to the extent consideration of these grants and tax credits are essential to achieving the required BCR.

When providing National Grid with the total cost of the system, a breakdown of overall installed cost, equipment cost, and federal tax credits/federal grants should be provided.⁴ Providing this level of detail is advantageous to the applicant as some of the listed costs may not necessarily be attributable to the incremental costs of the CHP project. This will allow National Grid to work with the applicant to exclude those costs which are not directly part of the CHP system. This could enhance the likelihood that the project BCR is greater than or equal to 1.0.

Tax credits and grants, etc., which are indirectly funded by the system benefits charge are not permitted to be included in a reduction of installed cost for purposes of the BCR analysis.

Maintenance Contract: CHP systems eligible for National Grid incentive must have in place a maintenance agreement covering a minimum period of time through the first major overhaul, typically around three years.

Wider Facility Energy Efficiency: A building or process materially lacking in implementation of cost-effective energy efficiency measures may be ineligible to receive any CHP incentive payment. Specific requirements shall be determined by National Grid.

Note that on average, non-CHP energy efficiency measures have a higher BCR than CHP and should be implemented as the first choice. This is especially significant given that interactions may exist between other building energy efficiency measures and operation of the CHP system. For instance, replacing an older boiler with a more efficient one may result in a lower CHP system thermal benefit than if the existing boiler were to remain in place. Quantification of CHP benefits must consider any contemplated changes in baseline conditions. This avoids overstating the thermal efficiency benefits from a CHP project.

⁴ At a minimum, the breakdown between material and labor costs must be provided.

In general, CHP systems which are sized without taking into account available electrical and thermal energy efficiency measures may ultimately end up being oversized relative to the eventual building electric and thermal load if standard building energy efficiency measures are implemented after a CHP system is installed.

Timing of CHP System Order: Customers who have already placed an order for a CHP system may be denied an incentive offer if there is a strong likelihood they would be considered a free rider, i.e. they would have moved forward without a National Grid incentive. Customers who are relying on an incentive must defer ordering CHP equipment until a pre-approval letter has been received from National Grid.

Incentive Levels

Assuming a project qualifies for a CHP incentive, as discussed in the preceding section and subject to passing the BCR test, the specific incentive award will vary depending on the size of a project and other project attributes described in more detail below. The Tier 1, 2, 3, and 4 incentive structure is for CHP projects that meet all program requirements under the Retrofit Program and shall consist of the implementation of CHP projects in support of an existing facility. This is a guideline but the actual incentive amount will be at the discretion of National Grid to consider other factors such as program budgets, etc.

Tier 1

\$900/Net kW for CHP with annual efficiency >55% and <60%

Tier 2

\$1000/Net kW for CHP with annual efficiency > or equal to 60%

Tier 3

Reduce the site energy use at least 5% or identified by TA study - \$1125/kW for CHP projects with annual efficiency >55% and <60%

Tier 4

Reduce the site energy use at least 5% or identified by TA study - \$1250/kW for CHP projects > or equal to 60% annual efficiency

Clarification Notes for all Tiers

- a. Additional EE measures are to be identified and discussed with the customer and National Grid prior to the CHP incentive proposal.
- b. Total incentive payments (inclusive of AGT incentive) may not exceed 70% of the total project cost.
- c. CHP system sizing shall not exceed the thermal and/or electrical loads of the building after implementing the identified EE measures.
- d. TA study subsidy shall be as outlined in "Co-Funding of Engineering Technical Assessments" below.

- e. Each non-CHP measure shall earn incentives based on its own merit under the EE programs and shall not reduce the incentives for the CHP measure.
- f. Tier 1 Payment Schedule:
 - At the discretion of National Grid, 80% of the incentive may be paid upon the installation of the system in accordance with the minimum requirements document (MRD) and all PA interconnect requirements have been completed by the customer and, therefore, the remaining 20% of the incentive shall be paid after a post operational review (commissioning) of the CHP system in accordance with the MRD
- g. Some CHP projects may be eligible to receive Advanced Gas Technology (AGT) incentive. Please contact our Advanced Gas Technology Administrator at Fred.Paine@nationalgrid.com or call (781) 907-1539 for more information.
- h. Projects > 1 MW — There may be a performance based additional incentive up to \$20/kW-Yr. for a period of 10 years, not to exceed the limit of 70% cost. Repayment provisions apply in the event that the project is abandoned, removed, sold or no longer utilized as the primary source of heat and electricity by the customer within 10 years of final incentive payment authorization.
- i. All incentives will not exceed 70% of the installed cost
- j. 20% of the incentive will be held until commissioning is completed
- k. MRD governs the scope, commissioning, and M&V requirements

Clarification Notes for Tiers 3 and 4

A customer may be treated as having made this commitment to energy efficiency if it has made investments to achieve similar load reductions through energy efficiency within the previous five years. If CHP facility sizing is determined by electric load (or not constrained by either electric or thermal load), the requirement will be 5% of electric usage; if the facility sizing is determined by thermal load, the requirement will be 5% of thermal energy usage. The energy efficiency measures will themselves be eligible for incentives, and are not part of the CHP incentive package cap.

Payment Schedule:

80% of the Tier 1 or 2 incentive may be paid upon installation of the CHP system as described in the MRD and all National Grid interconnect requirements have been completed by the customer. The remaining 20% of the Tier 1 or 2 incentive shall be paid after commissioning of the CHP system in accordance with the MRD. Per the requirements listed above, metered M&V data displaying the required annual efficiency shall be required. The remaining Tier 3 and 4 incentive shall be equal to the difference between the Tier 1 or 2 incentive. The approved Tier 3 and 4 incentive may be paid after all agreed upon additional non-CHP EE measures have been implemented in accordance with the MRD.

New Construction

CHP systems included in qualifying new construction projects, as determined and defined by National Grid, shall receive the aforementioned Tier 1 and Tier 2 CHP incentive. At the discretion of National Grid, and dependent on available funding, additional incentives may be considered on a case by case basis provided that:

- a. significant total site energy savings (after all agreed to EE measures excluding the CHP are implemented) is expected over the base case, which is defined as a building meeting the energy efficiency requirements of the RI Building Code at the time of construction permit.
- b. The CHP system shall have an estimated total annual efficiency **greater than 55%** for Tier 1 and **greater than 60%** for Tier 2
- c. The final incentive amount shall be subject to the discretion of National Grid.
- d. The incentive level shall not exceed the 75% of the incremental cost of the CHP project (heating and cooling plant).

New Construction Payment Schedule:

80% of the Tier 1 and Tier 2 incentive shall be paid upon the installation of the system as described in the MRD and all NGrid interconnect requirements have been completed by the customer and, therefore, the remaining 20% of the Tier 1 incentive shall be paid after commissioning of the CHP system in accordance with the MRD. Per the requirements listed above, metered M&V data displaying the annual efficiency shall be required. In the event that additional customer incentives are negotiated, the incremental incentive may be paid after all agreed upon additional EE measures have been implemented and commissioned by the agreed upon schedule.

Advanced Payment of Approved Incentive:

Applicable to all four incentive tiers for new construction and retrofit projects, at the discretion of National Grid the customer may receive an incentive advance of \$150/kW by placing the order for the system within ninety days of receiving a pre-approval letter. The incentive advance shall be deducted from the initial 80% incentive payment. If the CHP system installation fails to meet the agreed upon schedule, then the customer shall return the incentive to National Grid.

Interconnection Approval

Please note that approval of an incentive payment for CHP shall not constitute approval of a project's utility interconnection. There is a separate application process for receiving approval to interconnect a CHP system with National Grid. Please contact https://www.nationalgridus.com/narragansett/home/energyeff/distributed_generation to learn how to apply for interconnection.

CHP Incentive Application Process

Early Engagement with the Program Administrator

It is highly recommended that the customer establish a dialogue with National Grid during the early stages of developing a CHP project. By doing so, feedback can be given to the customer in the early stages of the development process regarding the likely cost-effectiveness of the proposed project. If one or more configurations for a

CHP are NOT going to meet the minimum criteria for an incentive, it's best for everyone involved to receive early feedback on this result.

A critical path item that should be determined early in the process is to affirm that the electric utility circuit is compatible with a CHP project, i.e. not on an area network. Please note that a circuit compatibility check is not the same as receiving approval to interconnect a CHP project with the electric utility. Please contact the applicable electric account executive to determine compatibility. Since the electric utility interconnection application process and installation may be time consuming and costly, in the early project development stage please contact the applicable electric utility account executive.

For systems firing natural gas, confirmation should be received from the gas account executive that sufficient gas volume and pressure is available to supply a facility's total gas requirements for the proposed CHP system and other existing or new gas equipment and appliances. Some early study work may be necessary to determine the range of systems being considered and the gas firing rate for each CHP option under consideration.

Authorization to Share Customer Data

Because there are usually multiple parties involved in the analysis and implementation of a CHP system, it is essential for a customer to give permission to share data with third parties involved in the development of the project. Attachments 5 and 6 allow the customer to grant permission for the utility or third party energy suppliers to share electrical data with third parties. Please consult with your natural gas utility representative to determine if gas interval data is available and how to obtain it.

CHP Application Form

Applications for CHP incentives are submitted using the Custom Application form:

<https://www1.nationalgridus.com/EnergyEfficiencyPrograms>

The following clarifications might be helpful:

Page 1 of the application seeks information from the customer and requires the customer's signature. Please note that the customer is defined as the entity responsible for paying the electric utility bill and whose name is on the electric bills with the listed account number. In some cases, the customer may not actually own the CHP equipment. For example, the equipment may be owned by a third party and the customer simply purchases the electric and thermal output from the system. The customer may receive the incentive payment directly either in the form of a check or a credit on their electric bill or may choose to assign the incentive payment to the vendor who is installing the CHP system. The entity receiving the incentive payment, i.e. customer or vendor, shall list their Tax ID number on this sheet.

Page 4 of the application summarizes the key information needed by National Grid to perform a BCR analysis.

Table 1 of the form requests a summary of electric energy (kWh) and demand reductions (kW) according to the time periods defined in the notes below the table. Note that these peak and off-peak periods are different from those defined in a customer's rate tariff.

Table 2 requests cost information for the project. Most projects will involve a new CHP system installation at an existing facility, in which case the cost is defined as the total installation cost of the CHP system including any balance of plant work directly associated with the CHP installation.

If a project involves a new building or facility in which CHP is part of the proposed construction, consult with your National Grid representative to determine the details of how to develop costs associated with a "baseline" case.

Table 3 requests information pertaining to Non-Electric Benefits. Since CHP usually trades additional fuel costs for electricity, fuel and O&M costs will be a net cost *increase* rather than a net benefit and should therefore be entered as negative values.

For example, the mmBtu impact in this table would be:

Boiler fuel savings - CHP system fuel consumption, where

$$\text{Annual boiler fuel savings} = \frac{\text{annual thermal energy displaced by the CHP system}}{\text{existing boiler efficiency}}$$

Page 5 of the application is the Minimum Requirements Document - see Attachment 8 Sample Minimum Requirements Document for CHP Projects.

Hourly Simulation: As electric and thermal loads for most facilities vary both daily and seasonally, it is essential that a simulation be conducted to project CHP system performance for each hour of the year. Attachment 3 describes the level of data detail that must be included in the Custom Application. At least one year of electric and heating fuel data is required in order to create this simulation.

The simulation model supporting this data will also need to be provided with the application.

Electricity Data: Electric interval data is available from National Grid for time of use customers to use in establishing the baseline conditions. The data is available in either 15 minute or hourly increments. Attachment 4 is a standard request form for electric interval data. This data can be adjusted as necessary for weather normalization and/or other possible load changes such as improvements in building energy efficiency, planned process expansions, etc.

Gas Interval Data: In some instances, gas interval data may also be available to provide assistance in establishing the quantity and profile of gas being consumed for the facility

prior to the installation of a CHP system. Please consult with your natural gas utility representative to determine if gas interval data is available and how to obtain it.

In some cases additional analysis will be necessary if, for example, fuel data includes other loads which will *not* be offset by the thermal output of a CHP system. National Grid will review the methodology for estimating thermal loads which can be offset by a CHP system, and will determine whether it is acceptable. Generally, pre-installation thermal metering will be required on larger systems. For smaller systems, engineering estimation methodology may be acceptable in lieu of pre-installation thermal metering.

Columns A and B in Attachment 3 represent the purchased electricity and fuel to meet the facility load's pre-CHP. This is also referred to as the baseline conditions.

Columns C and D describe the facility's requirement for useful thermal energy (steam and hot water). As mentioned above, it may be necessary to adjust these values if building energy efficiency measures are envisioned. Weather normalization of these loads will be required.

Columns E to N describe the performance of the CHP system and the incremental impact that operation of the system will have on electric and thermal loads in the facility.

Columns O and P describe purchased electric and fuel requirements following completion of the CHP system. In this example, this CHP system produces both hot water and steam. Many applications will produce only one or the other.

In projects where some of the CHP system's thermal output drives an absorption chiller, additional columns will be needed to show how this impacts the electric chiller's kW and kWh consumption.

Typical Approval Path

Attachment 1 is a flow chart describing the approval path for a CHP incentive.

Note: If desired, a list of CHP suppliers and engineering consultants can be provided by National Grid. Contact your National Grid representative for more information.

A CHP custom application can be submitted whether or not a specific developer or piece of equipment has been chosen. For example, if a customer has engaged an engineer who is studying the feasibility of a CHP system, referred to as a "CHP Technical Assessment," the study itself could provide enough information to allow National Grid to offer a CHP incentive, providing the study deliverables include the information requested herein, and the project meets all qualifying requirements. The level of detail required in the application implies that a detailed equipment specification has been developed to the point where equipment quotes can be obtained, and these in turn are necessary to determine costs, benefits, and BCR. This approach can be taken if, for example, the customer desires to receive a commitment from National Grid regarding the availability of funding before spending additional time and resources to obtain detailed engineering design.

Similarly, a CHP incentive offer can be made and a contract signed whether or not a specific piece of equipment has been selected, as long as the project passes the BCR test and a Minimum Requirements Document has been completed and accepted by National Grid.

Minimum Requirements Document (MRD): The MRD will accompany the Incentive Pre-Approval package. This document is developed in consultation with National Grid and cites specific system attributes and performance. In general the MRD is written around a fairly rigorous system specification. As long as the eventual project design and operation is in compliance with the MRD, no additional approvals are necessary. Please request the latest copy of a sample MRD from National Grid. In general the MRD is a more detailed version of the information requested in Page 5 of the Custom Application Form.

There is a downside to writing an MRD around a particular manufacturer's CHP system, as the CHP pre-approval offer may lock the customer into actually installing that system. If the customer later issues a request for proposals, and the successful bidder's system is not in compliance with the MRD, it may be necessary to reapply. There's also a risk that a different system may not satisfy the benefit/cost ratio. In general the MRD should avoid being tied to a specific manufacturer and model of equipment unless the customer is sure of the system that will be installed.

Allocation of Energy Benefits

Other than the energy cost savings realized by the Customer, National Grid is entitled to 100% of the benefits and rights associated with the CHP installation. This is described in Section 19 of the Terms and Conditions of the Custom Application form.

Co-funding of Engineering Technical Assessments

National Grid may offer partial funding for engineering feasibility studies that provide the deliverables described in Attachment 2 of the Appendix, "CHP Technical Assessments."

Co-funding of Engineering Services for CHP studies is limited to the deliverables listed in Attachment 2. Detailed design work as required to actually install the CHP system is NOT eligible for co-funding. Co-funding is usually limited to 50% of the reasonable costs of performing the study, as determined solely by National Grid. Please contact National Grid to request a co-payment of a Technical Assessment.

If the customer decides to install a CHP system, the entity, parent company or affiliate of that entity performing the Technical Assessment is precluded from performing detailed design or any other post-feasibility engineering work on the CHP system and non-CHP energy efficiency measures.

A more limited scope for co-funding of engineering services may be approved under certain circumstances. An example of this would be services to obtain metered data on existing loads, in order to more accurately establish the thermal load profile which may be available for offset by a CHP system.

Engineering Firms Contracted to Perform Technical Reviews for Program Administrators

The engineering firm (or parent, or affiliate of that engineering firm) contracted directly by National Grid to perform a technical review of a third party proposal and/or study for a CHP project is precluded from seeking compensation for any CHP or other non-CHP energy efficiency work with that customer for a period of two years following the date that such firm is contracted by National Grid to perform that work. Also, this two year limitation applies to the engineering firm being contracted directly by that customer as well as indirectly through an entity contracted by that customer.

Post-Installation Requirements

Installation: Installation of the CHP system must comply with all the local, state and federal requirements and satisfy the permitting requirements including but not limited to air emissions. Meters are installed, in compliance with the governing MRD – see Attachment 7.

Sample Metering/Monitoring Requirements: The following table is a general illustration of the types of hardware and information that could be collected from installed meters. This example is for a single reciprocating-engine unit providing hot water to a customer’s space heating and domestic hot water systems. This may not be indicative of the requirements for more complicated systems.

Equipment	Data Gathered	Used to calculate
(Qty) Temperature Probes	Temperatures (describe)	Percentage of recovered heat that serves domestic hot water, building heat, or is rejected
BTU meter, using flow and ΔT sensors, with pulse adapter	Total BTU/hr of net heat recovery by time/date	Heat utilized for process/heating loads
Three-phase electric meter with pulse adapter	Generated electricity output by time/date	Electricity generated, system efficiency
Natural gas meter with pulse adapter	Natural gas flow rate by time-of-use	Corrected natural gas input to system
(Qty) Current Transducers	Current draw of CHP system components	Parasitic pump/fan loads

Metering Requirements: Metering/monitoring should capture 15 minute interval data for control inputs and outputs, electricity produced, and thermal energy recovered. The monitoring system should provide hourly trends for gas input and engine run hours. For larger CHP systems, collection of data for auxiliary equipment such as secondary pumps, radiator fans etc., supporting the CHP plant should also be collected. From a cost standpoint, it may not be practical to collect continuous data for all auxiliary equipment. Other means of approximating these loads, such as engineering estimates or spot measurements may be more appropriate. However, Regulatory Evaluation activities may require additional metering which surpasses what the customer might feel is essential to meet operational needs.

Monitoring and metering is an important discussion to have with National Grid at the time the MRD is being developed.

During the post-installation inspection, National Grid shall confirm that the data collection system is properly installed, including proper metering, calibration, reporting and archiving of data.

Post-Operational Assessment

As described in the MRD, documentation similar to that listed below should be available during commissioning and post operational assessment by National Grid. The requested information will generally be limited to those items which are integral to the design and operation of the system and are produced by the installing contractor(s) and/or engineer(s) in the course of their normal activities. The listed items DO NOT need to be received prior to National Grid issuing an incentive pre-approval letter. This list is typical of larger projects; smaller projects may have fewer requirements.

- a. Design specifications, data sheets and O&M manuals for the following equipment:
 1. Prime mover and generator set
 2. Cooling system(s)
 3. Electric Motors and Variable Frequency Drives
 4. Heat Exchangers – Exhaust Gas, Primary Water/Hot Water
 5. Control Systems
 6. Metering and Monitoring Equipment
- b. Plant layout drawings, flow and PID diagrams
- c. Controls Drawings, Final Sequence of Operations programming, O&M Manuals, Instrumentation List and Datasheets
- d. Demonstration of ability to provide CHP plant performance data for one hour intervals
- e. Gross and Net kW output after parasitic loads are deducted
- f. Fuel input to CHP system
- g. Heat energy exported from CHP plant
- h. Heat energy provided to process/heating system
- i. Cumulative data as needed to measure seasonal and annual overall plant efficiency
- j. CHP system components status
- k. Any other points that are necessary to determine the net plant efficiency based on the final plant design
- l. Ability to export weekly data electronically to third party during the Commissioning process
- m. Provide meter calibration data and provide Testing and Balancing (“TAB”) reports for all applicable CHP equipment.

Post-Installation Evaluation

National Grid is required to evaluate the energy efficiency programs to determine the percentage of predicted energy savings which are actually realized and to utilize those results to make program improvements. Typically, evaluations of such energy efficiency projects are performed on a subset of projects each year.

Due to typical facility load variations, a full (or nearly full) year of data is often needed in order to perform a meaningful evaluation. Some proposed CHP systems already include the necessary meters to gather some or all of the essential data for performing regulatory evaluations. This is especially the case when:

- a. Systems are part of a performance-based contract; or
- b. A third party will own and operate the system and sell the electric and thermal outputs to the customer.

To the extent that metering/monitoring that meets the requirements for regulatory evaluation is already included in proposed CHP systems, such metered data must be provided at no cost to National Grid.

In those few instances where metered data is not being collected for all of the necessary inputs and outputs (or is of insufficient precision), then National Grid may subsidize the cost of equipment and/or installation services.

Note that meters installed for evaluation purposes may only be in place temporarily and may have different specifications from those more appropriate to permanent use and/or those normally installed with a given CHP system.

Prior to the issue of a pre-approval incentive letter, National Grid in consultation with a third party evaluation consultant, will discuss the specific metering requirements and determine which party is responsible for equipment and/or installation costs. This is an evolving area so specific metering requirements are not listed within the current version of this document. Please contact National Grid with any questions.

Appendix

Attachment 1 – Typical CHP Approval Path

Attachment 2 – Combined Heat and Power Technical Assessments

Attachment 3 – Example of Hourly Data - Before and After CHP

Attachment 4 – Request for Hourly Electric Interval Data

Attachment 5 – Customer Authorization for Release of Data to Third Parties

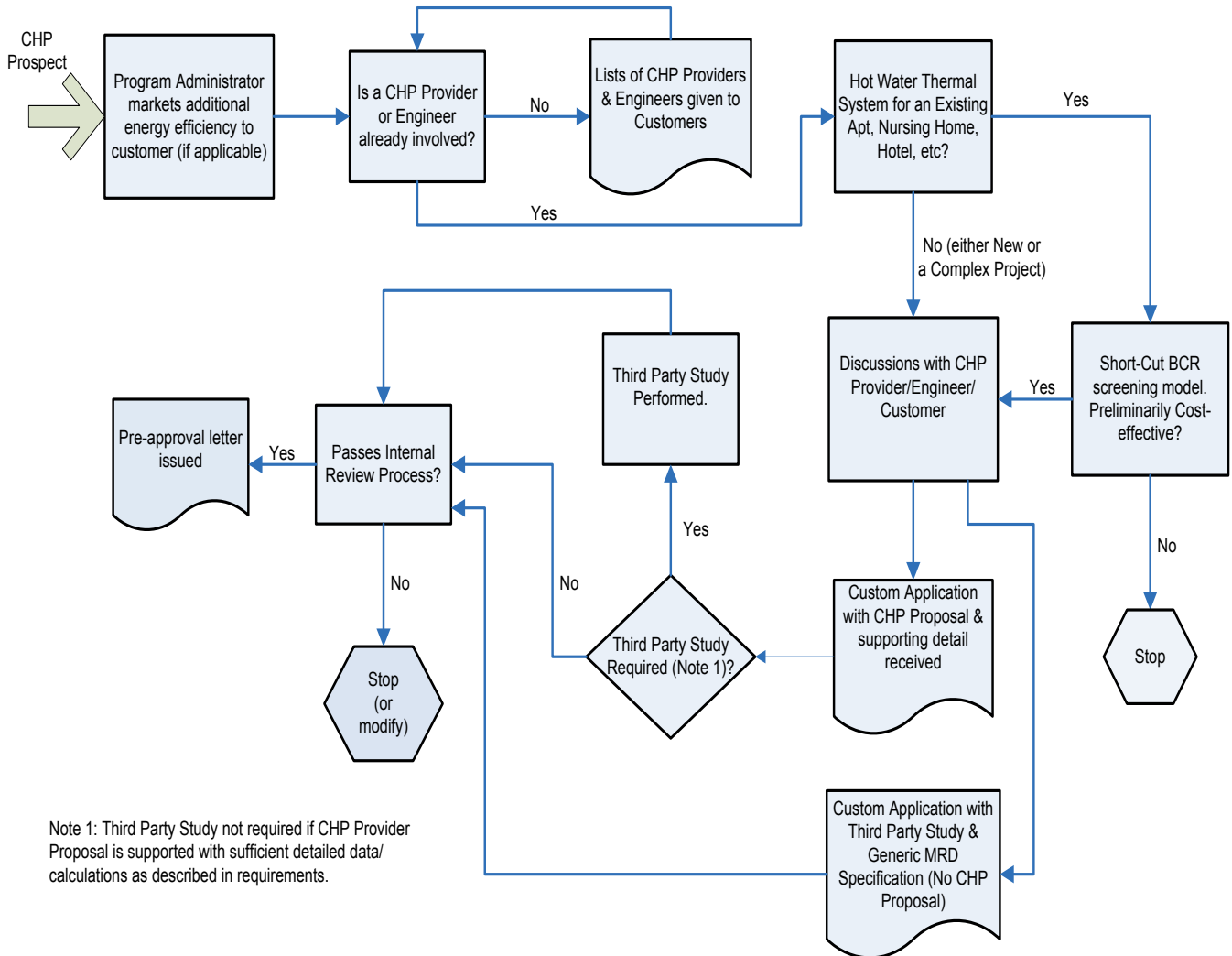
Attachment 6 – Interval Data Request Fee Schedule

Attachment 7 – Meter specifications

Attachment 8 – Sample Minimum Requirements Document for CHP Projects

Attachment 9 – Monitoring & Verification Plan

Attachment 1 – Typical CHP Approval Path



Attachment 2 – Combined Heat and Power Technical Assessments

The following should be included in a CHP technical assessment:

- A description of the existing facility including pertinent equipment and existing processes/loads.
- Identification of cost and estimated savings of potential building energy efficiency measurements likely to be cost-effective derived from an energy review of the building/facility.
- Description of the proposed CHP system and how it will fit into the existing building or facility process.
- CHP manufacturer's descriptions and specifications (a detailed quote is ideal).
- Estimate of parasitic loads associated with the CHP system.
- All relevant electric and fuel data including consumption and billing information
- Hourly or daily data for existing thermal loads to the extent feasible (or data estimated by alternative means). The more accurate and detailed this information, the better.
- Confirmation of available gas supply and pressure requirements.
- A draft Minimum Requirements Document for the proposed CHP system and sequence of operations (obtain sample MRD from National Grid and work with them to tailor it to a specific project).
- Description of methodology used to estimate the expected performance of the CHP system including a list of all assumptions and support of such assumptions.
- Hourly model showing the expected performance of the CHP system
- Profile showing facility kWh, kW, and thermal needs prior to and after the installation of a CHP system summarized monthly and annually according to peak- and off-peak periods.
- Detailed cost estimates for the CHP system for installation, commissioning, operation, routine and major maintenance.
- Customer financial analysis considering all variables which impact economics.
- Completed custom application form (ready for a customer's signature).

Attachment 3 – Example of Hourly Data – Before and After CHP

Figure 4
 CHP Incentive Application - Hourly Summary Detail to be included with Custom Application (Note 1)
 Note 1: Include excel model showing all assumptions and formulas which produces this summary.

Month	Day	Hour	Total Facility Pre-CHP				CHP System										Total Facility Post-CHP	
			A	B	C	D	E	F	G	H	I = G - H	J	K	L = J - K	M = (H + K) / Boiler Efficiency	N = E - M	O = A - F	P = B + N
			kWh	Fuel (Btus)	Steam (Btus)	Hot Water (Btus)	Fuel Fired to CHP (Btus)	kWh produced net of parasitics	Steam Produced (Btus)	Steam Energy Used (Btus)	Steam Energy Dumped (Btus)	Hot Water Energy Produced (Btus)	Hot Water Used (Btus)	Hot Water Energy Dumped (Btus)	Boiler Fuel Saved (Btus)	Incremental Facility Fuel Increase (Btus)	kWh	Fuel (Btus)
Jan	1	1																
Jan	1	2																
Jan	1	3																
Jan	1	4																
Jan	1	5																
Jan	1	6																
Jan	1	7																
Jan	1	8																
Jan	1	9																
Jan	1	10																
Jan	1	11																
Jan	1	12																
Jan	1	13																
Jan	1	14																
Jan	1	15																
Jan	1	16																
Jan	1	17																
Jan	1	18																
Jan	1	19																
Jan	1	20																
Jan	1	21																
Jan	1	22																
Jan	1	23																
Jan	1	24																
Jan	2	1																
Jan	2	2																
Jan	2	3																
Jan	2	4																
Jan	2	5																
Jan	2	6																
Jan	2	7																
Jan	2	8																
Jan	2	9																
Jan	2	10																
Jan	2	11																
Jan	2	12																
Jan	2	13																
Jan	2	14																
Jan	2	15																
Jan	2	16																
Jan	2	17																
Jan	2	18																
Jan	2	19																
Jan	2	20																
Jan	2	21																
Jan	2	22																
Jan	2	23																
Jan	2	24																

Repeat for each hour of each day for all months

Attachment 4 – Request for Hourly Electric Interval Data

Following is a request form for Electric Interval Data from the customer's distribution company.

Please note that the "Supplier/Broker" can be any third-party that may need this information in order to perform a Technical Assessment or prepare a CHP Application. The customer must sign this document to authorize releasing electric interval data to a third party (the customer can also request this data directly).

Contact your applicable natural gas account executive to determine whether such hourly gas interval data is available and the mechanism for requesting this data.

Attachment 5 – Customer Authorization for Release of Data INTERVAL DATA REQUEST FORM

Distribution Company : **NGRID**

• Customer Name (as it appears on the bill): _____

Account Number	Service Address	Billing Name	Billing Address	City/State/Zip

Please attach additional accounts as needed, and reference accordingly in the table above with "see attached".

Supplier/Broker Name: _____

Supplier/Broker Contact: _____

Supplier/Broker Contact Telephone Number: _____

Supplier/Broker Contact Email Address: _____

***CHECK ONE Invoice the customer OR Invoice the supplier/broker as follows:

Supplier/Broker Signature: _____ Date: _____

Supplier Billing Address _____

This section is to be completed by the Customer

I authorize the above distribution company to share my interval data with the above supplier/broker until I or my supplier/broker notifies you otherwise. The tariff allows for one request per account per calendar year for historical data at no charge. I understand that a fee will be assessed for any subsequent request made within the calendar year. Please accept this request for information under the authority of this form as if the request was made directly to you. You are permitted to accept this form as authentic whether it is the original executed document or a copy thereof. My signature affirms that I have the authority to make and sign this request on behalf of my company.

Customer Signature/Date _____

Printed Name/Title _____

Company Name _____

NOTE: Rhode Island Tariff allows for one request per account per calendar year for historical data at no charge. If available, I would like to exercise that option now: YES NO

Specify desired data interval: 1 hour 15 minute

Specify time period for which data is desired:

From: Hour _____ Day _____ Month _____ Year _____

To: Hour _____ Day _____ Month _____ Year _____

Attachment 6 INTERVAL DATA REQUEST FEE SCHEDULE

National Grid

Please scan the completed form into PDF format and email to:

IntervalDataRequests@us.ngrid.com

Historical request for Interval Data:

· Initial Request – covering a single calendar year **No Charge**

Subsequent historical request within same calendar year

· Single Retail delivery service account **\$83.00**

· Additional retail delivery service account – requested at same time
\$6.41 per account x # of accounts (_____) _____

Subscription Service for Interval Data over the Internet:

· Single retail delivery service account **\$154.00**

· Additional retail delivery service account – requested at same time
\$76.89 per account x # of accounts (_____) _____

*****CIRCLE ONE** 1 Year Contract OR Automatic Yearly Renewal
Total Charges \$ _____

Attachment 7

APPROVED CHP SYSTEM METERS FOR CHP

GENERAL NOTES:

- 1) All meters required under National Grid MRD must meet and conform to all applicable Laws, Ordinances, Codes, Regulations and Standards.
- 2) All meters required by MRD must be of Revenue Grade quality and reliability.
- 3) Metering standards for additional fuels (such as landfill methane, other biogas, and solid biomass), additional meter types, and other revisions of the metering standards, as appropriate, will be included in future editions of this document.

FUEL METERS Natural Gas

Meter Type	Minimum Accuracy	Minimum Frequency of Calibration	Other
Flow rate Range	± 2%	Annual	See Notes.
All Meters, including Diaphragm & Rotary - Flow rate Range		2% Max DF ≤ Flow ≤ 100% Max DF Where Max DF is Maximum Design Flow Rate	

Natural Gas Meter Notes:

- 1) All Diaphragm meters must conform to the current ANSI B109 2 standard.
- 2) All Rotary meters must conform to the current ANSI B109 3 standard.
- 3) All volumetric measurements must be adjusted to Standard Cubic Feet (SCF) (i.e. corrected for temperature and pressure). Meter models that are pressure and temperature compensated will satisfy this requirement. Meters with settable pressure compensation may be used if installed down stream of a pressure regulator. The applicant may propose an alternate method for converting the metered flow to units of Standard Cubic Feet.
- 4) A gas meter furnished and installed as a part of a dedicated gas supply line to the CHP system by the applicable gas utility, will be accepted as an approved natural gas fuel meter.

Meter Type	Flow rate	Accuracy	Minimum Frequency of Calibration	Other
Positive Displacement	Full Range	± 1%	Annual	See general and specific Notes.

Liquid Fuel Meter Notes:

- 1) The approved meter standard above applies **only** to the following ASTM fuels (with associated Higher Heating Values): B-100 (120,714 BTU/gallon); M-100 (56,800 BTU/gallon); E-100 (76,100 BTU/gallon).
- 2) M-100 and E-100 are each eligible *only* if derived from biogenic, non-petrochemical based sources.
- 3) Blended and non ASTM Fuels: The approved meter standard above does not apply for these cases.

NOTE: The standard for blended and non-ASTM liquid fuels is RESERVED and will be issued in a future edition of this document.

THERMAL ENERGY METERS Thermal Energy -- Steam Service

Line Size	Meter System	BTU Meter Field Accuracy	Minimum Frequency of Calibration	Notes	
	<p>Flow Element And BTU Computer</p> <p>Temperature Element Installed in Thermowell</p>				
≥ 8"	<p><i>Flow Meter:</i> Orifice Plate with Differential Pressure Element and Transmitter. <i>BTU Computer:</i> Automated real-time computation and totalizer.</p>	Only with superheat.	± 3%	Annual	If a significant fraction of flow occurs at velocities well below the nominal design flow rate, this flow meter type may undercount flow and BTU's. This can be addressed by installing a two meter manifold with a normal to high meter in parallel with a low flow meter.
< 8"	<p><i>Flow Element:</i> Vortex Shedding Tube. <i>BTU Computer:</i> Automated real-time computation and totalizer.</p>	Only with superheat.	± 3%	Biannual	

Thermal Energy -- Hot Water					
CHP Output	Meter System		BTU Meter Field Accuracy	Minimum Frequency of Calibration	Notes
	Flow Meter And BTU Computer	Temperature Measurement			
> 10kW	In-line Ultrasonic Flow Tube (no strap-on) or Magmeter. <i>BTU Computer:</i> Automated real-time computation and totalizer.	Yes Must be installed in a Thermowell	± 3%	Biannual	Temperature elements installed in thermal wells.
≤ 10kW	In-line Ultrasonic Flow or strap-on or Magmeter. <i>BTU Computer:</i> Automated real-time computation and totalizer.	Yes	± 3%	Biannual	Temperature elements installed in thermal wells or securely mounted with excellent thermal contact and insulation on piping.

Attachment 8

Sample Minimum Requirements Document for CHP Projects

Customer Name	<i>Insert Customer name- XYZ Corp.</i>	EI or D2	<i>Choose one</i>
Location	<i>Insert Customer Address</i>	Application#:	<i>Inset App. No.</i>
ECM	<i>Briefly describe the size and technology of the CHP project e.g. 500 kW CHP using gas fired reciprocating Engine</i>		

This document specifies the agreed upon minimum equipment specifications and operational requirements of the proposed system. These requirements shall address the criteria necessary to be met to achieve the demand and energy savings estimated in the engineering analysis for this project. (Use additional sheets if necessary).

Check yes or no Pre Construction	<p>SEQUENCE OF OPERATION: Provide a description of equipment operating sequences, setpoints, operating schedules, balancing requirements (flow, velocity, head, etc) or any other required operating parameters</p> <p>Submittals: Provide major equipment data sheets</p>
Yes <input type="checkbox"/> No <input type="checkbox"/>	<p>Milestone 1. Equipment submittal and approval of Sequence of Operation (SOO). Required Completion Date: Before the start of the combined heat and power (CHP) installation at the site and prior to approving submittals for the major equipment.</p> <ol style="list-style-type: none"> 1. The XXXX CHP plant shall be controlled to follow ELEC/Thermal loads. (Thermal “following” is defined as limiting the engine output such that the heat output does not exceed that required to satisfy the connected heating loads.) Accordingly, sustained use of radiators for heat rejection should not be required. The thermal loads connected to the engines shall be as follows: <ol style="list-style-type: none"> a. XXXXX b. XXXXX c. XXXXX 2. The Generator shall connect to the XXX heating source via the Piping and instrument Diagram (P&ID) titled XXXXX, dated XXXXX drawings attached to this MRD. Line out how the unit will be connected here, unique to every installation. 3. The electrical output of the generator should not exceed the demand of the connected electrical loads. That is, should the thermal-following approach yield a combined electrical output that exceeds the electrical demand of the connected buildings, the output of the generator(s) shall be reduced such that the generator(s) do not back-feed the grid. 4. The remaining load of the boiler plants shall provide heating water when the CHP thermal output is not able to satisfy the facility thermal demands, either because the generator is at its maximum output or because the electrical demands limit the generator output. 5. Btu meters will be utilized to quantify the total useful thermal output (engine thermal output- dump radiator) of the generator. 6. Provide a process and instrument diagram showing all CHP plant equipment, fuel gas and hot water piping, and instruments including Btu meters. 7. All meters shall be utility grade. 8. The XXXX kW CHP Plant is designed to meet the following performance criteria for the year:

	<ul style="list-style-type: none"> a. Annual Production of x,xxx,xxx kWh (accounting for parasitics; see Milestone 2a below) b. Facility fuel increase x,xxx,xxx therms (fuel fired for cogen minus boiler fuel saved) HHV c. Boiler fuel offset of x,xxx,xxx therms d. Electrical efficiency XX% (accounting for parasitics) e. Thermal efficiency XX% (accounting for parasitics) f. Plant overall efficiency XX% g. X.XXX.XXX ton hours of chilled water production.
--	--

Post Inspection	Installation Completion: Provide a list of equipment or materials installed as part of this project. Include mfr, model, HP, kW, efficiency ratings, etc .and confirm completion
-----------------	---

Yes <input type="checkbox"/> No <input type="checkbox"/>	<p>Milestone 2a. Installation Completion</p> <ul style="list-style-type: none"> 1. Install X,XXX kW, Type of Generator and heat recovery system. Engine shall be XXXXX model or equal. 2. CHP unit shall meet the following criteria derived from the product data sheet: <ul style="list-style-type: none"> a. electric output: X,XXX kW, not including parasitic loads (pumps and radiator fans) b. thermal output, main hot water: X,XXX MBH with XXX°F jacket water c. thermal output, oil cooler: XXX MBH d. thermal output, exhaust: X,XXX MBH based on exhaust gas cooled to XXX°F e. overall efficiency: XX% at full load based on XXX,XXX Btu/min (X,XXX MBH) of fuel input (using HHV) f. part-load HHV performance as follows:
--	---

	100%	80%	60%
Electrical output*	1,016 kW	813 kW	610 kW
Fuel input (HHV)	10,626 MBH	8,722 MBH	6,851 MBH
Main hot water output	2,719 MBH	2,231 MBH	1,760 MBH
Oil cooler output	365 MBH	351 MBH	334 MBH
Exhaust output	1,976 MBH	1, 658 MBH	1,339 MBH
Total recoverable heat	5,060 MBH	4,240 MBH	3,433 MBH
Electrical efficiency*	36.5%	35.6	33.9
Thermal efficiency*	47.6%	48.6%	50.1%

*not accounting for parasitic loads; based on HHV

- g. Thermal output delivered to heating system: X,XX MBH at XXX°F supply, XXX°F return hot water accounting for exhaust heat recovery heat exchanger, oil cooler heat exchangers, and final heat exchanger as per P&ID.
 - h. Parasitic loads: estimated at XX kW during full-load operation; inclusive of all pumps and fans; accounting for expected parasitic equipment loading at these conditions.
3. Install three 15 hp circulation pumps to circulate water from the primary cogeneration loop to the new Building 3 hot water loop.
 4. Install three new, 322-ton absorption chillers, based on 195 deg. F entering hot water temperature, Thermax model 5G 5L C, or equal, serving the Building 3 and 4 chilled water system. The unit shall have a coefficient of performance of at least 0.7 at AHRI conditions.
 5. Install a Btu meter to measure the thermal output of the CHP unit(s).
 6. Install Btu meters to measure the hot water and chilled water connections to the absorption chiller.
 7. Provide meters as required to monitor energy output, waste heat utilization and electrical power production. Both electric meters and gas meters shall have accuracy equal to utility grade meters.
 8. Thermal energy monitoring accuracy shall meet:
 - a. As a minimum the system shall be able to capture 15-minute interval data for electricity produced, waste heat utilization, fuel input and power consumed by all auxiliary equipment, including domestic hot water system and space heating boiler system.
 - b. Fifteen-minute trends for gas input and engine run hours shall be provided.
 - c. The control system should be capable of trending and archiving this data for a period of one year before overwriting.
 - d. Archived data shall be capable of being exported to a designated ftp server via CSV compatible electronic files.
 9. During post inspection confirm that data collection system is installed,

	connected to properly calibrated metering and reporting and archiving data properly.
Yes <input type="checkbox"/> No <input type="checkbox"/>	<p><u>Milestone 2b. Demonstration of Operability</u> <u>(Completion of Milestone 2A and 2b is required for the payment of 80% of the incentive)</u></p> <p>Confirm that the above noted equipment is installed and operational for completing Milestone 2b. Installed and operational is defined as :</p> <ul style="list-style-type: none"> o All components of the new XXXX kW CHP and XXX ton absorption chillers including all meters are installed and connected to their respective building systems. o All equipment, piping (including flushing), electrical and control wiring is completed, so that all CHP units can run in an automatic mode. The minimum performance shall be the following: <ul style="list-style-type: none"> a. Annual Production of X,XXX,XXX kWh (accounting for parasitics; see Milestone 2a below) b. Boiler fuel offset of XX,XXX therms (based on XX% overall boiler efficiency) c. Plant overall efficiency XX% o Interconnection facilities are completed and accepted by Retail Connections Engineering, and insurance certificates are in place. This does not absolve the customer from meeting any other jurisdictional permits or other regulatory requirements. o All instrumentation and meters required are installed and are working properly and porting data to remote website. o 15-minute interval data shall be made available and exported to remote website for access to PA in CSV format for a 2 week period. o Customer and its vendors have completed their own commissioning with reports on major pieces of equipment provided.
<p align="center">Post Operational Assessment</p>	<p>DOCUMENTATION: List written documentation required to train, verify, operate, or maintain the equipment being installed or controlled. This may include specification sheets, test reports, construction drawings, etc.: Provide a list of Trending Requirements required to verify proper system operation. Trends should document operational sequences, setpoints and scheduling of equipment as described in TA Study</p>
Yes <input type="checkbox"/> No <input type="checkbox"/>	<p><u>Milestone 3. (Completion of Milestone 3 & 4 is required for the payment of the remaining 20% of the incentive.)</u></p> <p>Validate the following items:</p> <p>A. O&M manuals and documentation are on site</p> <ol style="list-style-type: none"> 1. All equipment catalogs and performance specifications for the one, XXX kW CHP units. O&M manuals for the following equipment: <ul style="list-style-type: none"> a. Engine/generator sets b. Pumps c. Electric motors d. Heat exchangers e. Absorption chillers f. Metering equipment (gas, electric, hot water) 2. Design Drawings (Process and Instrument Diagrams and Mechanical Piping

Drawings, Instrumentation List and equipment Data Sheets) are available on site.

(a) Waterside economizer sequence is implemented and operational

(b) Availability of trend data and confirming of its exportability.

1. Provide 15-minute interval data for the following points as a minimum. Provide the capacity for and enable trend data archiving for a period of at least one year.
 - a. Gross and net (after parasitics) kW and kWh electrical output – including parasitic consumption measurements
 - b. Fuel input to CHP plant (therms or MMBtu)
 - c. Hot water generated and utilized by CHP plant (therms or MMBtu)
 - d. Flow/temperature on heat recovery supply/return
 - e. Any point necessary to determine other parasitic loads, based on the final plant design
 - f. Absorption chiller Btu meter readings, and water temperatures (inlet and outlet) and flows, for both the hot water and chilled water connections
2. Provide ability to export weekly data electronically to third party via email or FTP at all times.
3. Post operational assessment process will require functional testing of the CHP and the thermal and electrical interface to the buildings, a minimum 2 weeks and up to 6 months of concurrent 15 minute interval data for all points noted above. If equipment fails to meet expected sequences of operations and corrections are needed, additional trend data shall be provided to confirm any seasonal changes in operations.
4. Provide meter calibration data.
5. Install, maintain, and calibrate measurement, monitoring and data recording equipment for the lifetime of the project in compliance with ISO-New England's Manual for Measurement and Verification of Demand Resources, including:
 - a. Meet or exceed the relevant American National Standard Institute or equivalent standard for the equipment.
 - b. Meet the relevant Institute of Electrical and Electronics Engineers standards for equipment installed and measuring electric demand on electric circuits with significant harmonics and have a digital sampling rate of at least 2.6 kHz.
 - c. Utilize a pulse rate within the resolution capabilities of the recorder, if recording pulses from measurement and monitoring devices.
 - d. Have an accuracy of no less than +/-2% using a true Root Mean Square measurement device to measure electrical demand or using any measurement or monitoring equipment for proxy variables to calculate electrical demand.

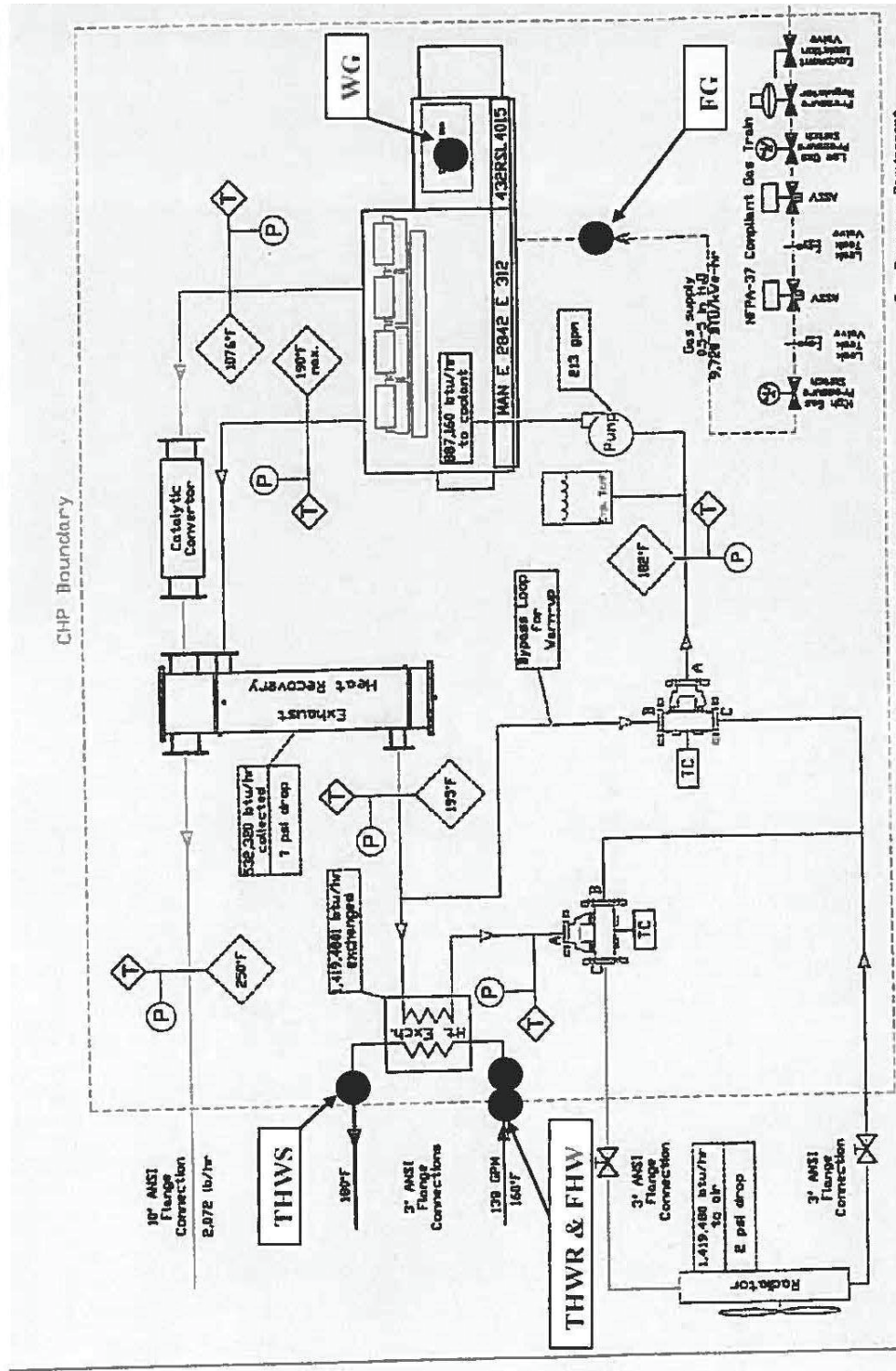
	<ul style="list-style-type: none"> e. Install measurement or monitoring devices that direct measure electrical demand from three-phase devices such that measurements are taken on all three-phases to account for any phase imbalance or an equivalent method that can measure electrical demand using two phases. f. Include the power factor of the end-uses in the demand calculations if measuring current and nominal voltage to calculate electrical demand. g. Synchronize data recorders with the National Institute of Standards and Technology to an accuracy of +/- 2 minutes per month. h. Calibrate to meet or exceed Federal Energy Management Program Measurement and Verification Guidelines, applicable American Society of Heating, Refrigeration and Air Conditioning Engineers standards, National Institute of Standards and Technology, or equivalent standard for the equipment and provide meter calibration data. i. Ensure all measurement, monitoring and data logging equipment is maintained to meet or exceed industry and manufacturer maintenance standards and maintain documentation on all such calibration activities. j. Collect electricity usage data at a frequency of 15 minute intervals or less. <p>B. Sequence of operation is working as outlined in MRD, TA report and supporting energy saving calculations.</p>
Post Inspection <input type="checkbox"/>	OTHER REQUIREMENTS: Describe any requirements for demolition, removal, etc of existing equipment.
Yes <input type="checkbox"/> No <input type="checkbox"/>	<p style="color: red;">Milestone 4</p> <ol style="list-style-type: none"> 1. Customer will have a minimum 3 year or first major overhaul maintenance contract to help achieve long term proposed operational strategies and energy cost savings. Normal planned /routine maintenance shall be conducted where possible during National Grid off-peak billing periods. 2. Provide detailed project cost breakdown by major system components. Provide copies of paid invoices to support the project costs.

The pre-approved incentive is subject to Retail Companies' POST INSPECTION of final specifications, drawings and operation of the proposed equipment. In the event the proposed system is altered from the above description, notify the Company of the change prior to the equipment purchase and installation as the change in design and operation may impact the available incentive.

Tech Support Rep	Date	Customer Signature	Date

Attachment: P&ID dated x/x/20xx

M&V Plan



Recovered Heat System Schematic with Installed Sensor Locations