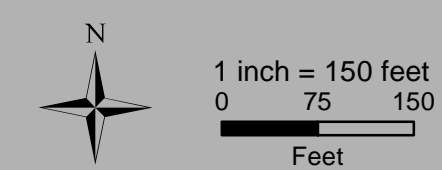


**Legend**

● Existing Pole	— Reconductor OH Line	MADEP Hydrologic Connections	★ Certified Vernal Pools	*Indicates Layers Set to Transparency
● Install Pole	— Remove OH Line	MADEP Wetlands*	★ Potential Vernal Pools	
● Overhead Work	— Rebuild UG Conduit	MADEP Open Water*	★ NHESP Priority & Estimated Habitats	Article 97 Lands
● Pole Removal	— Potential Access Road	200ft Riverfront Area	★ National Grid Property	Private
● Pole Replacement	— Construction Mats	100ft Buffer to Wetlands & Streams	★ Parcel Boundaries	Municipal
— OH, Existing	— Work Envelope*	25ft No-Disturb Zone	— Rail Trail	
— OH, Install OH Line	— Field Delineated Intermittent Stream	FEMA 100yr Floodplain*	— Chainlink Fence	
— OH, OH Work	— Field Delineated Wetland Lines	Public Water Supply	— Wooden Fence	
— Rebuild OH Line	— Field Delineated Wetlands*	Zone II Wellhead Protection Area	— Stone Wall	



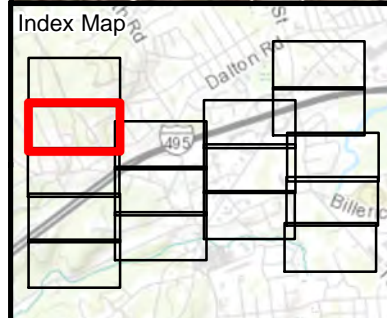
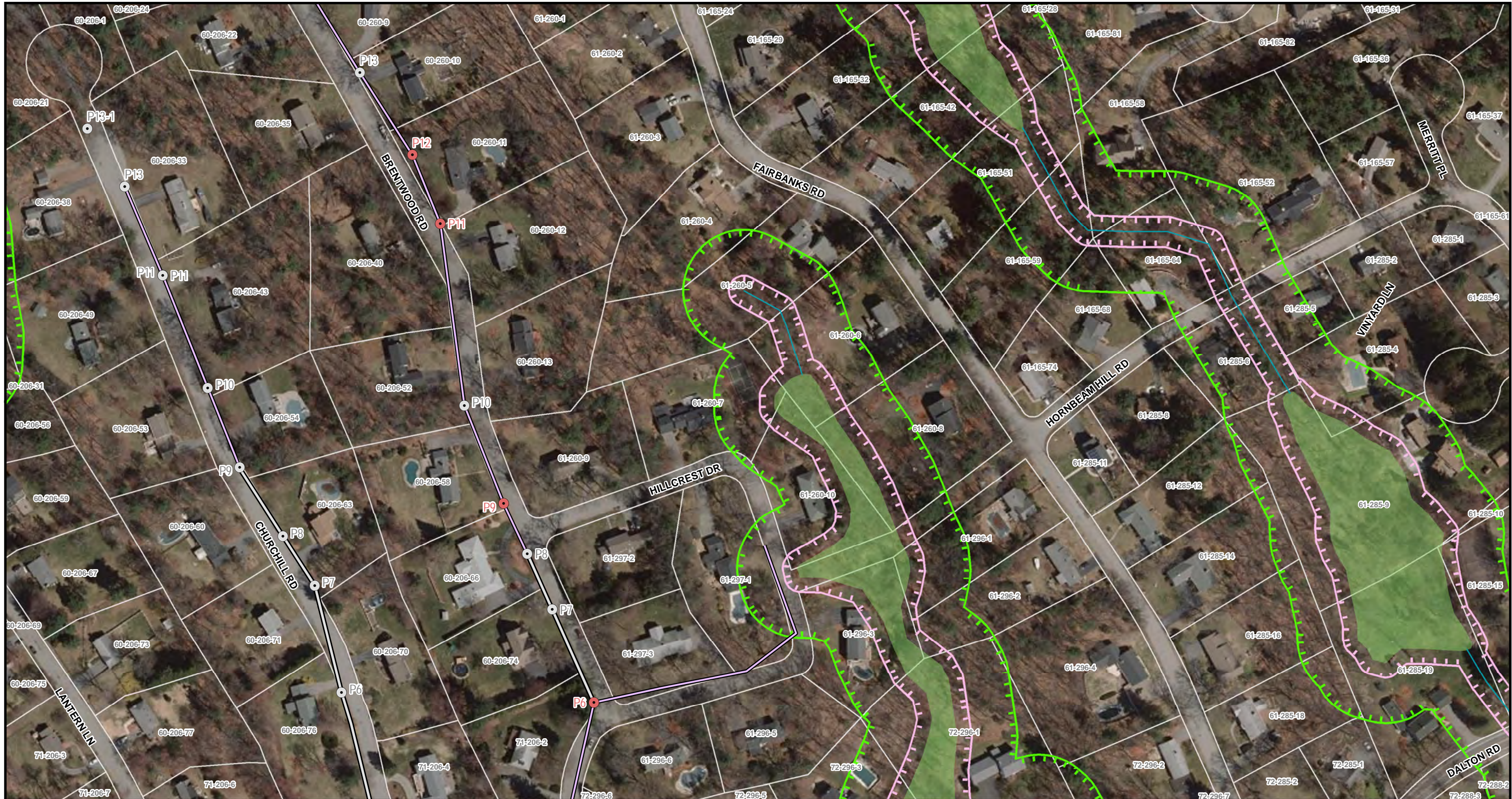
**CHELMSFORD #9 SUBSTATION & DLINE**  
 WR# 30159989

**Environmental Resources Map**

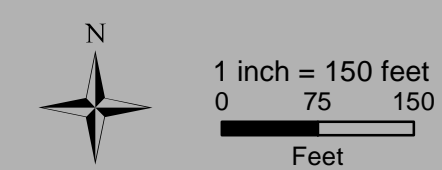
Chelmsford, MA  
 Page 1 of 16

Sources: Esri, HERE, Garmin, Intermap, increment P Corp., GEBCO, USGS, FAO, NPS, NRCAN, GeoBase, IGN, Kadaster NL, Ordnance Survey, Esri Japan, METI, Esri China (Hong Kong), (c) OpenStreetMap contributors, and the GIS User Community

nationalgrid  
 BSC GROUP



<ul style="list-style-type: none"> <li><span style="color: red;">●</span> Existing Pole</li> <li><span style="color: yellow;">●</span> Install Pole</li> <li><span style="color: blue;">●</span> Overhead Work</li> <li><span style="color: orange;">●</span> Pole Removal</li> <li><span style="color: grey;">●</span> Pole Replacement</li> <li><span style="color: red;">—</span> OH, Existing</li> <li><span style="color: yellow;">—</span> OH, Install OH Line</li> <li><span style="color: blue;">—</span> OH, OH Work</li> <li><span style="color: purple;">—</span> Rebuild OH Line</li> <li><span style="color: black;">—</span> Reconductor OH Line</li> <li><span style="color: orange;">—</span> Remove OH Line</li> <li><span style="color: yellow;">—</span> Rebuild UG Conduit</li> <li><span style="color: orange;">—</span> Potential Access Road</li> <li><span style="color: brown;">—</span> Construction Mats</li> <li><span style="color: orange;">—</span> Work Envelope*</li> <li><span style="color: blue;">—</span> Field Delineated Intermittent Stream</li> <li><span style="color: green;">—</span> Field Delineated Wetland Lines</li> <li><span style="color: lightgreen;">—</span> Field Delineated Wetlands*</li> </ul>	<ul style="list-style-type: none"> <li><span style="color: lightblue;">—</span> MADEP Hydrologic Connections</li> <li><span style="color: lightgreen;">—</span> MADEP Wetlands*</li> <li><span style="color: lightblue;">—</span> MADEP Open Water*</li> <li><span style="color: lightgreen;">—</span> 200ft Riverfront Area</li> <li><span style="color: lightgreen;">—</span> 100ft Buffer to Wetlands &amp; Streams</li> <li><span style="color: pink;">—</span> 25ft No-Disturb Zone</li> <li><span style="color: lightblue;">—</span> FEMA 100yr Floodplain*</li> <li><span style="color: blue;">—</span> Public Water Supply</li> <li><span style="color: lightblue;">—</span> Zone II Wellhead Protection Area</li> <li><span style="color: red;">*</span> Certified Vernal Pools</li> <li><span style="color: yellow;">*</span> Potential Vernal Pools</li> <li><span style="color: orange;">*</span> NHESP Priority &amp; Estimated Habitats</li> <li><span style="color: red;">*</span> National Grid Property</li> <li><span style="color: grey;">*</span> Parcel Boundaries</li> <li><span style="color: red;">*</span> Rail Trail</li> <li><span style="color: black;">x</span> Chainlink Fence</li> <li><span style="color: black;">x</span> Wooden Fence</li> <li><span style="color: grey;">●</span> Stone Wall</li> </ul>	<p><i>*Indicates Layers Set to Transparency</i></p> <p><b>Article 97 Lands</b></p> <ul style="list-style-type: none"> <li><span style="color: yellow;">■</span> Private</li> <li><span style="color: pink;">■</span> Municipal</li> </ul>
---	--	---



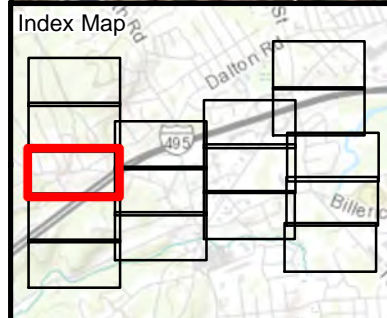
## CHELMSFORD #9 SUBSTATION & DLIN

### WR# 30159989

#### Environmental Resources Map

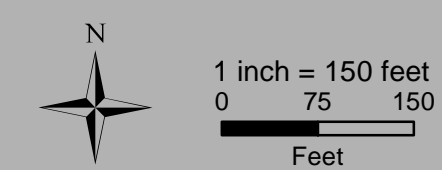
Chelmsford, MA  
Page 2 of 16

Sources: Esri, HERE, Garmin, Intermap, increment P Corp., GEBCO, USGS, FAO, NPS, NRCAN, GeoBase, IGN, Kadaster NL, Ordnance Survey, Esri Japan, METI, Esri China (Hong Kong), (c) OpenStreetMap contributors, and the GIS User Community



**Legend**

● Existing Pole	— Reconductor OH Line	MADEP Hydrologic Connections	★ Certified Vernal Pools	<b>*Indicates Layers Set to Transparency</b>
● Install Pole	— Remove OH Line	MADEP Wetlands*	★ Potential Vernal Pools	<b>Article 97 Lands</b>
● Overhead Work	— Rebuild UG Conduit	MADEP Open Water*	★ NHESP Priority & Estimated Habitats	Private
● Pole Removal	— Potential Access Road	200ft Riverfront Area	★ National Grid Property	Municipal
● Pole Replacement	— Construction Mats	100ft Buffer to Wetlands & Streams	★ Parcel Boundaries	
— OH, Existing	— Work Envelope*	25ft No-Disturb Zone	— Rail Trail	
— OH, Install OH Line	— Field Delineated Intermittent Stream	FEMA 100yr Floodplain*	— Chainlink Fence	
— OH, OH Work	— Field Delineated Wetland Lines	Public Water Supply	— Wooden Fence	
— Rebuild OH Line	— Field Delineated Wetlands*	Zone II Wellhead Protection Area	— Stone Wall	



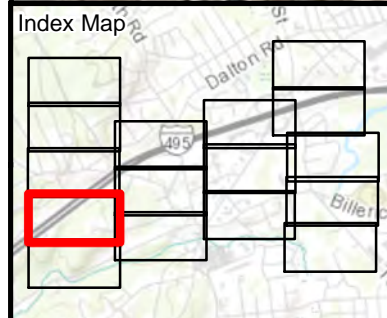
**CHELMSFORD #9 SUBSTATION & DLINE**  
**WR# 30159989**

**Environmental Resources Map**

Chelmsford, MA  
 Page 3 of 16

Sources: Esri, HERE, Garmin, Intermap, increment P Corp., GEBCO, USGS, FAO, NPS, NRCAN, GeoBase, IGN, Kadaster NL, Ordnance Survey, Esri Japan, METI, Esri China (Hong Kong), (c) OpenStreetMap contributors, and the GIS User Community

**nationalgrid**  
**BSC GROUP**



**Legend**

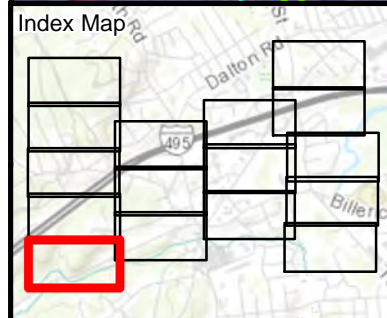
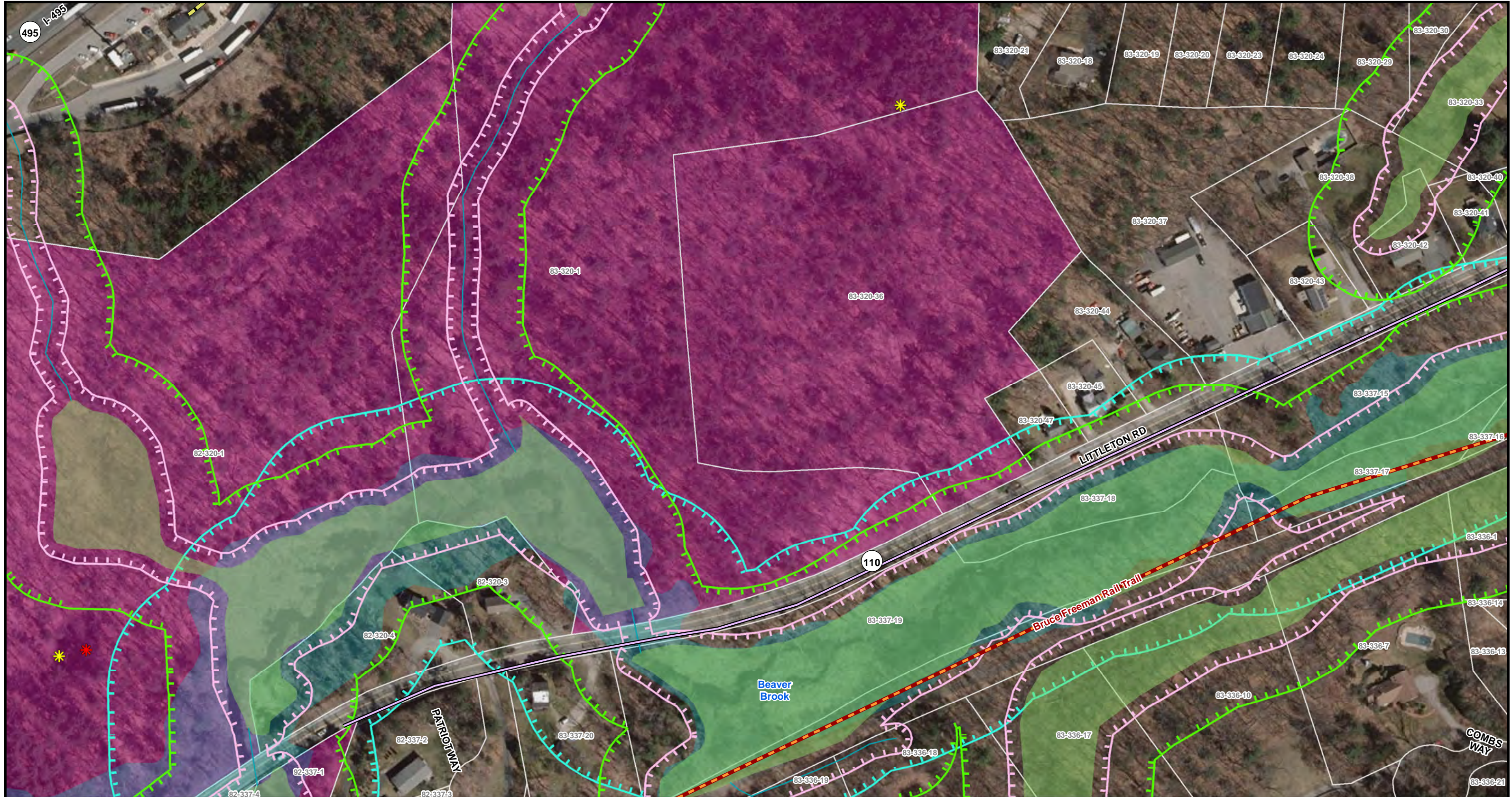
● Existing Pole	— Reconductor OH Line	MADEP Hydrologic Connections	★ Certified Vernal Pools	<b>*Indicates Layers Set to Transparency</b>
● Install Pole	— Remove OH Line	MADEP Wetlands*	★ Potential Vernal Pools	Article 97 Lands
● Overhead Work	— Rebuild UG Conduit	MADEP Open Water*	★ NHESP Priority & Estimated Habitats	Private
● Pole Removal	— Potential Access Road	200ft Riverfront Area	★ National Grid Property	Municipal
● Pole Replacement	— Construction Mats	100ft Buffer to Wetlands & Streams	★ Parcel Boundaries	
— OH, Existing	— Work Envelope*	25ft No-Disturb Zone	— Rail Trail	
— OH, Install OH Line	— Field Delineated Intermittent Stream	FEMA 100yr Floodplain*	— Chainlink Fence	
— OH, OH Work	— Field Delineated Wetland Lines	Public Water Supply	— Wooden Fence	
— Rebuild OH Line	— Field Delineated Wetlands*	Zone II Wellhead Protection Area	— Stone Wall	

**CHELMSFORD #9 SUBSTATION & DLINE**  
**WR# 30159989**

**Environmental Resources Map**

Chelmsford, MA  
 Page 4 of 16

Sources: Esri, HERE, Garmin, Intermap, increment P Corp., GEBCO, USGS, FAO, NPS, NRCAN, GeoBase, IGN, Kadaster NL, Ordnance Survey, Esri Japan, METI, Esri China (Hong Kong), (c) OpenStreetMap contributors, and the GIS User Community



Legend		*Indicates Layers Set to Transparency	
Existing Pole	Reconductor OH Line	Certified Vernal Pools	<b>Article 97 Lands</b>
Install Pole	Remove OH Line	Potential Vernal Pools	Private
Overhead Work	Rebuild UG Conduit	NHESP Priority & Estimated Habitats	Municipal
Pole Removal	Potential Access Road	National Grid Property	
Pole Replacement	Construction Mats	Parcel Boundaries	
OH, Existing	Work Envelope*	Rail Trail	
OH, Install OH Line	Field Delineated Intermittent Stream	Chainlink Fence	
OH, OH Work	Field Delineated Wetland Lines	Wooden Fence	
Rebuild OH Line	Field Delineated Wetlands*	Stone Wall	
MADEP Hydrologic Connections	25ft No-Disturb Zone		
MADEP Wetlands*	FEMA 100yr Floodplain*		
MADEP Open Water*	Public Water Supply		
200ft Riverfront Area	Zone II Wellhead Protection Area		
100ft Buffer to Wetlands & Streams			

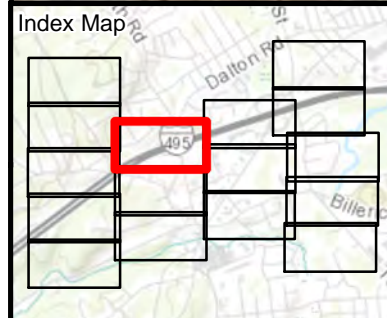
**CHELMSFORD #9 SUBSTATION & DLINE**  
 WR# 30159989

**Environmental Resources Map**

Chelmsford, MA  
 Page 5 of 16

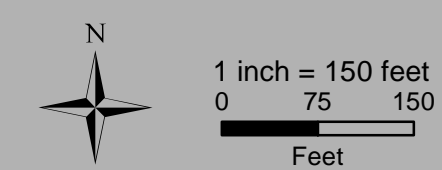
Sources: Esri, HERE, Garmin, Intermap, increment P Corp., GEBCO, USGS, FAO, NPS, NRCAN, GeoBase, IGN, Kadaster NL, Ordnance Survey, Esri Japan, METI, Esri China (Hong Kong), (c) OpenStreetMap contributors, and the GIS User Community

**nationalgrid**  
**BSC GROUP**



**Legend**

<ul style="list-style-type: none"> <li>● Existing Pole</li> <li>● Install Pole</li> <li>● Overhead Work</li> <li>● Pole Removal</li> <li>● Pole Replacement</li> <li>— OH, Existing</li> <li>— OH, Install OH Line</li> <li>— OH, OH Work</li> <li>— Rebuild OH Line</li> </ul>	<ul style="list-style-type: none"> <li>— Reconductor OH Line</li> <li>— Remove OH Line</li> <li>— Rebuild UG Conduit</li> <li>— Potential Access Road</li> <li>— Construction Mats</li> <li>— Work Envelope*</li> <li>— Field Delineated Intermittent Stream</li> <li>— Field Delineated Wetland Lines</li> <li>— Field Delineated Wetlands*</li> </ul>	<ul style="list-style-type: none"> <li>— MADEP Hydrologic Connections</li> <li>— MADEP Wetlands*</li> <li>— MADEP Open Water*</li> <li>— 200ft Riverfront Area</li> <li>— 100ft Buffer to Wetlands &amp; Streams</li> <li>— 25ft No-Disturb Zone</li> <li>— FEMA 100yr Floodplain*</li> <li>— Public Water Supply</li> <li>— Zone II Wellhead Protection Area</li> </ul>	<ul style="list-style-type: none"> <li>★ Certified Vernal Pools</li> <li>★ Potential Vernal Pools</li> <li>★ NHESP Priority &amp; Estimated Habitats</li> <li>— National Grid Property</li> <li>— Parcel Boundaries</li> <li>— Rail Trail</li> <li>— Chainlink Fence</li> <li>— Wooden Fence</li> <li>— Stone Wall</li> </ul>	<p><i>*Indicates Layers Set to Transparency</i></p> <p><b>Article 97 Lands</b></p> <ul style="list-style-type: none"> <li>Private</li> <li>Municipal</li> </ul>
---	---	--	---	---

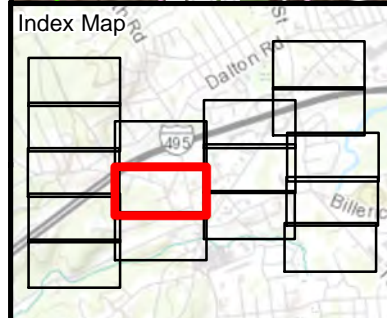


**CHELMSFORD #9 SUBSTATION & DLINE**  
**WR# 30160013**

**Environmental Resources Map**

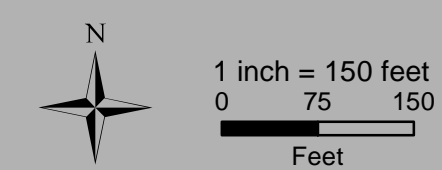
Chelmsford, MA  
 Page 6 of 16

Sources: Esri, HERE, Garmin, Intermap, increment P Corp., GEBCO, USGS, FAO, NPS, NRCAN, GeoBase, IGN, Kadaster NL, Ordnance Survey, Esri Japan, METI, Esri China (Hong Kong), (c) OpenStreetMap contributors, and the GIS User Community



**Legend**

● Existing Pole	— Reconductor OH Line	MADEP Hydrologic Connections	★ Certified Vernal Pools	<i>*Indicates Layers Set to Transparency</i>	
● Install Pole	— Remove OH Line	MADEP Wetlands*	★ Potential Vernal Pools	<b>Article 97 Lands</b>	
● Overhead Work	— Rebuild UG Conduit	MADEP Open Water*	★ NHESP Priority & Estimated Habitats	■ Private	■ Municipal
● Pole Removal	— Potential Access Road	200ft Riverfront Area	■ National Grid Property		
● Pole Replacement	— Construction Mats	100ft Buffer to Wetlands & Streams	■ Parcel Boundaries		
— OH, Existing	— Work Envelope*	25ft No-Disturb Zone	— Rail Trail		
— OH, Install OH Line	— Field Delineated Intermittent Stream	FEMA 100yr Floodplain*	— Chainlink Fence		
— OH, OH Work	— Field Delineated Wetland Lines	Public Water Supply	— Wooden Fence		
— Rebuild OH Line	— Field Delineated Wetlands*	Zone II Wellhead Protection Area	— Stone Wall		

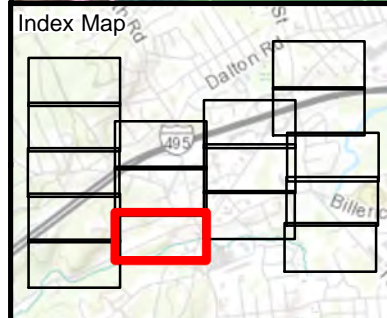


**CHELMSFORD #9 SUBSTATION & DLINE**  
 WR# 30159989 & WR# 30160013

**Environmental Resources Map**

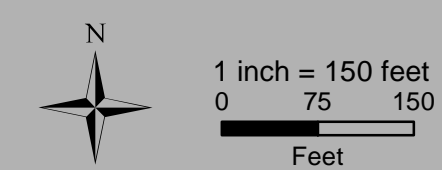
Chelmsford, MA  
 Page 7 of 16

Sources: Esri, HERE, Garmin, Intermap, increment P Corp., GEBCO, USGS, FAO, NPS, NRCAN, GeoBase, IGN, Kadaster NL, Ordnance Survey, Esri Japan, METI, Esri China (Hong Kong), (c) OpenStreetMap contributors, and the GIS User Community



**Legend**

● Existing Pole	— Reconductor OH Line	MADEP Hydrologic Connections	★ Certified Vernal Pools	★ Indicates Layers Set to Transparency
● Install Pole	— Remove OH Line	MADEP Wetlands*	★ Potential Vernal Pools	Article 97 Lands
● Overhead Work	— Rebuild UG Conduit	MADEP Open Water*	★ NHESP Priority & Estimated Habitats	Private
● Pole Removal	— Potential Access Road	200ft Riverfront Area	★ National Grid Property	Municipal
● Pole Replacement	— Construction Mats	100ft Buffer to Wetlands & Streams	★ Parcel Boundaries	
— OH, Existing	— Work Envelope*	25ft No-Disturb Zone	— Rail Trail	
— OH, Install OH Line	— Field Delineated Intermittent Stream	FEMA 100yr Floodplain*	— Chainlink Fence	
— OH, OH Work	— Field Delineated Wetland Lines	Public Water Supply	— Wooden Fence	
— Rebuild OH Line	— Field Delineated Wetlands*	Zone II Wellhead Protection Area	— Stone Wall	



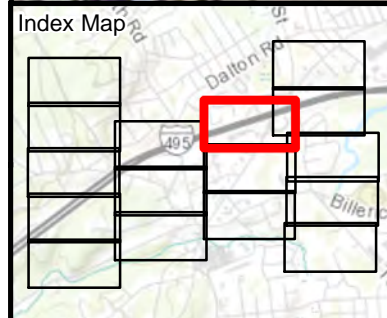
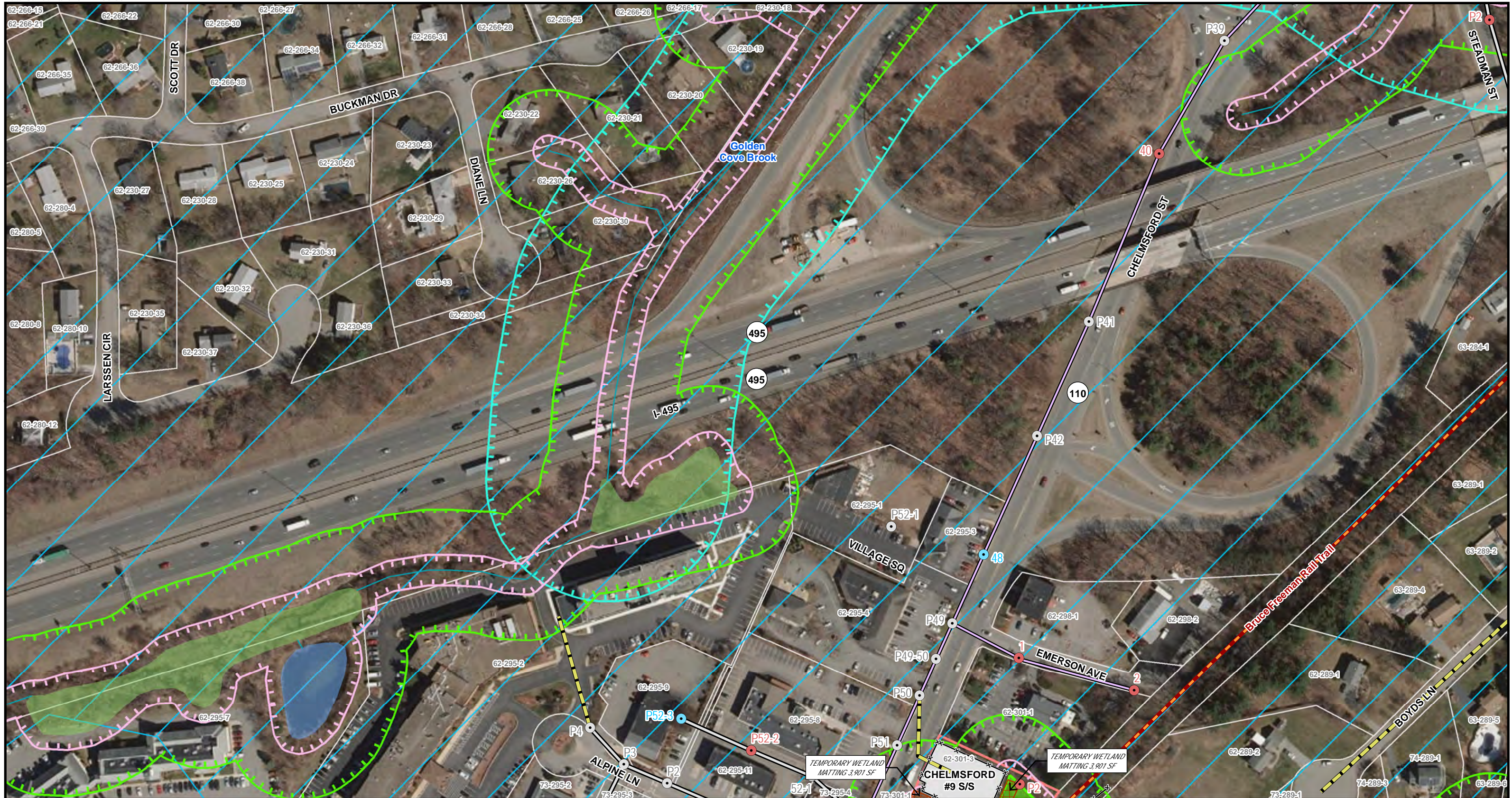
**CHELMSFORD #9 SUBSTATION & DLINE**  
 WR# 30159989 & WR# 30160013

**Environmental Resources Map**

Chelmsford, MA  
 Page 8 of 16

Sources: Esri, HERE, Garmin, Intermap, increment P Corp., GEBCO, USGS, FAO, NPS, NRCAN, GeoBase, IGN, Kadaster NL, Ordnance Survey, Esri Japan, METI, Esri China (Hong Kong), (c) OpenStreetMap contributors, and the GIS User Community





**Legend**

● Existing Pole	— Reconductor OH Line	— MADEP Hydrologic Connections	★ Certified Vernal Pools	★ Article 97 Lands
● Install Pole	— Remove OH Line	■ MADEP Wetlands*	★ Potential Vernal Pools	■ Private
● Overhead Work	— Rebuild UG Conduit	■ MADEP Open Water*	■ NHESP Priority & Estimated Habitats	■ Municipal
● Pole Removal	— Potential Access Road	■ 200ft Riverfront Area	■ National Grid Property	
● Pole Replacement	■ Construction Mats	■ 100ft Buffer to Wetlands & Streams	■ Parcel Boundaries	
— OH, Existing	■ Work Envelope*	■ 25ft No-Disturb Zone	— Rail Trail	
— OH, Install OH Line	— Field Delineated Intermittent Stream	■ FEMA 100yr Floodplain*	— Chainlink Fence	
— OH, OH Work	— Field Delineated Wetland Lines	■ Public Water Supply	— Wooden Fence	
— Rebuild OH Line	■ Field Delineated Wetlands*	■ Zone II Wellhead Protection Area	— Stone Wall	

*\*Indicates Layers Set to Transparency*

1 inch = 150 feet  
 0 75 150  
 Feet

North Arrow

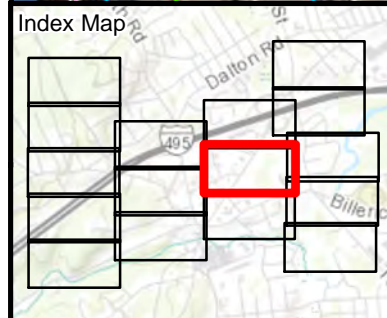
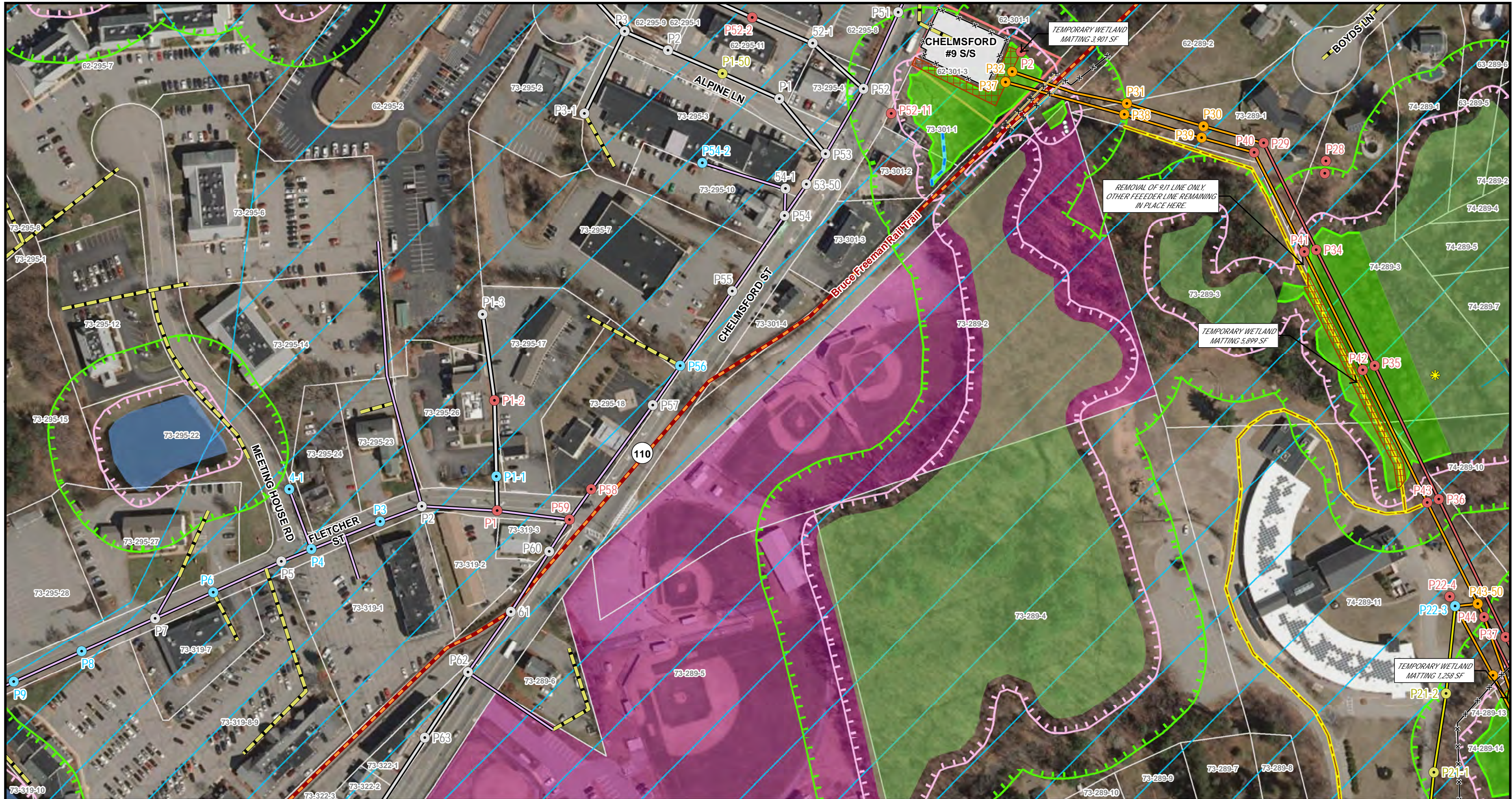
**CHELMSFORD #9 SUBSTATION & DLINE**  
 WR# 30160035

**Environmental Resources Map**

Chelmsford, MA  
 Page 9 of 16

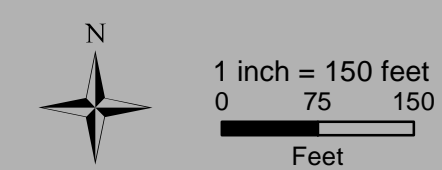
Sources: Esri, HERE, Garmin, Intermap, increment P Corp., GEBCO, USGS, FAO, NPS, NRCAN, GeoBase, IGN, Kadaster NL, Ordnance Survey, Esri Japan, METI, Esri China (Hong Kong), (c) OpenStreetMap contributors, and the GIS User Community

**nationalgrid**  
**BSC GROUP**



**Legend**

● Existing Pole	— Reconductor OH Line	— MADEP Hydrologic Connections	★ Certified Vernal Pools	★ *Indicates Layers Set to Transparency
● Install Pole	— Remove OH Line	— MADEP Wetlands*	★ Potential Vernal Pools	■ Article 97 Lands
● Overhead Work	— Rebuild UG Conduit	— MADEP Open Water*	■ NHESP Priority & Estimated Habitats	■ Private
● Pole Removal	— Potential Access Road	— 200ft Riverfront Area	■ National Grid Property	■ Municipal
● Pole Replacement	— Construction Mats	— 100ft Buffer to Wetlands & Streams	— Parcel Boundaries	
— OH, Existing	— Work Envelope*	— 25ft No-Disturb Zone	— Rail Trail	
— OH, Install OH Line	— Field Delineated Intermittent Stream	— FEMA 100yr Floodplain*	— Chainlink Fence	
— OH, OH Work	— Field Delineated Wetland Lines	— Public Water Supply	— Wooden Fence	
— Rebuild OH Line	— Field Delineated Wetlands*	— Zone II Wellhead Protection Area	— Stone Wall	

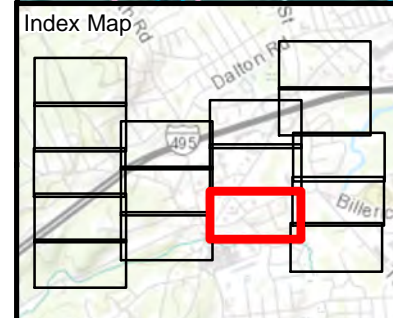


**CHELMSFORD #9 SUBSTATION & DLINE**  
**WR# 30160035 & WR# 30160013 & WR# 30318674**  
**Environmental Resources Map**

Chelmsford, MA  
 Page 10 of 16

Sources: Esri, HERE, Garmin, Intermap, increment P Corp., GEBCO, USGS, FAO, NPS, NRCAN, GeoBase, IGN, Kadaster NL, Ordnance Survey, Esri Japan, METI, Esri China (Hong Kong), (c) OpenStreetMap contributors, and the GIS User Community

**nationalgrid**  
**BSC GROUP**



**Legend**

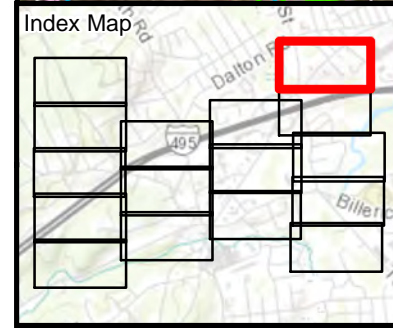
● Existing Pole	— Reconductor OH Line	MADEP Hydrologic Connections	★ Certified Vernal Pools	★ Indicates Layers Set to Transparency
● Install Pole	— Remove OH Line	MADEP Wetlands*	★ Potential Vernal Pools	Article 97 Lands
● Overhead Work	— Rebuild UG Conduit	MADEP Open Water*	★ NHESP Priority & Estimated Habitats	Private
● Pole Removal	— Potential Access Road	200ft Riverfront Area	★ National Grid Property	Municipal
● Pole Replacement	— Construction Mats	100ft Buffer to Wetlands & Streams	★ Parcel Boundaries	
— OH, Existing	— Work Envelope*	25ft No-Disturb Zone	— Rail Trail	
— OH, Install OH Line	— Field Delineated Intermittent Stream	FEMA 100yr Floodplain*	— Chainlink Fence	
— OH, OH Work	— Field Delineated Wetland Lines	Public Water Supply	— Wooden Fence	
— Rebuild OH Line	— Field Delineated Wetlands*	Zone II Wellhead Protection Area	— Stone Wall	

**CHELMSFORD #9 SUBSTATION & DLIN**  
 WR# 30159989 & WR# 30318674

**Environmental Resources Map**

Chelmsford, MA  
 Page 11 of 16

Sources: Esri, HERE, Garmin, Intermap, increment P Corp., GEBCO, USGS, FAO, NPS, NRCAN, GeoBase, IGN, Kadaster NL, Ordnance Survey, Esri Japan, METI, Esri China (Hong Kong), (c) OpenStreetMap contributors, and the GIS User Community



**Legend**

● Existing Pole	— Reconductor OH Line	MADEP Hydrologic Connections	★ Certified Vernal Pools	<b>*Indicates Layers Set to Transparency</b>
● Install Pole	— Remove OH Line	MADEP Wetlands*	★ Potential Vernal Pools	<b>Article 97 Lands</b>
● Overhead Work	— Rebuild UG Conduit	MADEP Open Water*	★ NHESP Priority & Estimated Habitats	Private
● Pole Removal	— Potential Access Road	200ft Riverfront Area	★ National Grid Property	Municipal
● Pole Replacement	— Construction Mats	100ft Buffer to Wetlands & Streams	★ Parcel Boundaries	
— OH, Existing	— Work Envelope*	25ft No-Disturb Zone	— Rail Trail	
— OH, Install OH Line	— Field Delineated Intermittent Stream	FEMA 100yr Floodplain*	— Chainlink Fence	
— OH, OH Work	— Field Delineated Wetland Lines	Public Water Supply	— Wooden Fence	
— Rebuild OH Line	— Field Delineated Wetlands*	Zone II Wellhead Protection Area	— Stone Wall	

**CHELMSFORD #9 SUBSTATION & DLINE**  
 WR# 30160035

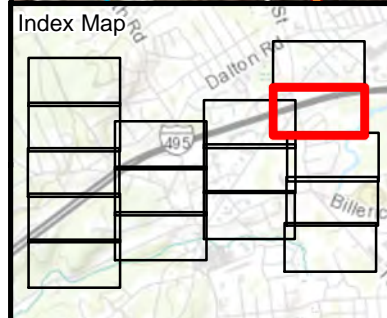
**Environmental Resources Map**

Chelmsford, MA  
 Page 12 of 16

1 inch = 150 feet  
 0 75 150  
 Feet

Sources: Esri, HERE, Garmin, Intermap, increment P Corp., GEBCO, USGS, FAO, NPS, NRCAN, GeoBase, IGN, Kadaster NL, Ordnance Survey, Esri Japan, METI, Esri China (Hong Kong), (c) OpenStreetMap contributors, and the GIS User Community

**nationalgrid**  
**BSC GROUP**



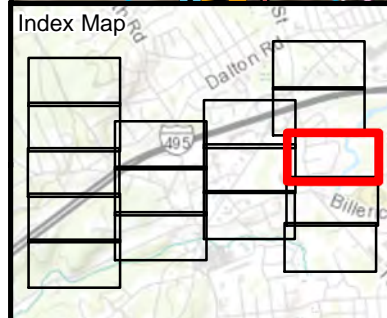
<ul style="list-style-type: none"> <li><span style="color: red;">●</span> Existing Pole</li> <li><span style="color: yellow;">●</span> Install Pole</li> <li><span style="color: blue;">●</span> Overhead Work</li> <li><span style="color: orange;">●</span> Pole Removal</li> <li><span style="color: grey;">●</span> Pole Replacement</li> <li><span style="color: red;">—</span> OH, Existing</li> <li><span style="color: yellow;">—</span> OH, Install OH Line</li> <li><span style="color: blue;">—</span> OH, OH Work</li> <li><span style="color: purple;">—</span> Rebuild OH Line</li> <li><span style="color: black;">—</span> Reconductor OH Line</li> <li><span style="color: orange;">—</span> Remove OH Line</li> <li><span style="color: yellow;">—</span> Rebuild UG Conduit</li> <li><span style="color: yellow;">—</span> Potential Access Road</li> <li><span style="color: brown;">—</span> Construction Mats</li> <li><span style="color: orange;">—</span> Work Envelope*</li> <li><span style="color: blue;">—</span> Field Delineated Intermittent Stream</li> <li><span style="color: green;">—</span> Field Delineated Wetland Lines</li> <li><span style="color: lightgreen;">—</span> Field Delineated Wetlands*</li> </ul>	<ul style="list-style-type: none"> <li><span style="color: blue;">—</span> MADEP Hydrologic Connections</li> <li><span style="color: lightgreen;">—</span> MADEP Wetlands*</li> <li><span style="color: lightblue;">—</span> MADEP Open Water*</li> <li><span style="color: cyan;">—</span> 200ft Riverfront Area</li> <li><span style="color: green;">—</span> 100ft Buffer to Wetlands &amp; Streams</li> <li><span style="color: pink;">—</span> 25ft No-Disturb Zone</li> <li><span style="color: lightblue;">—</span> FEMA 100yr Floodplain*</li> <li><span style="color: blue;">—</span> Public Water Supply</li> <li><span style="color: lightblue;">—</span> Zone II Wellhead Protection Area</li> </ul>	<ul style="list-style-type: none"> <li><span style="color: red;">✳</span> Certified Vernal Pools</li> <li><span style="color: yellow;">✳</span> Potential Vernal Pools</li> <li><span style="color: orange;">✳</span> NHESP Priority &amp; Estimated Habitats</li> <li><span style="color: red;">—</span> National Grid Property</li> <li><span style="color: grey;">—</span> Parcel Boundaries</li> <li><span style="color: red;">—</span> Rail Trail</li> <li><span style="color: black;">x—x</span> Chainlink Fence</li> <li><span style="color: black;">x—x</span> Wooden Fence</li> <li><span style="color: grey;">●●●●</span> Stone Wall</li> </ul>	<p><i>*Indicates Layers Set to Transparency</i></p> <p><b>Article 97 Lands</b></p> <ul style="list-style-type: none"> <li><span style="color: yellow;">■</span> Private</li> <li><span style="color: pink;">■</span> Municipal</li> </ul>
---	--	---	---

**CHELMSFORD #9 SUBSTATION & DLINE**  
 WR# 30160035

**Environmental Resources Map**

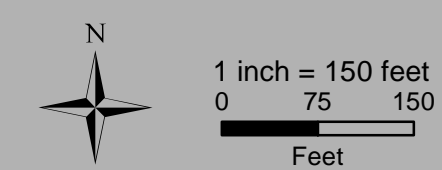
Chelmsford, MA  
 Page 13 of 16

Sources: Esri, HERE, Garmin, Intermap, increment P Corp., GEBCO, USGS, FAO, NPS, NRCAN, GeoBase, IGN, Kadaster NL, Ordnance Survey, Esri Japan, METI, Esri China (Hong Kong), (c) OpenStreetMap contributors, and the GIS User Community



**Legend**

● Existing Pole	— Reconductor OH Line	MADEP Hydrologic Connections	★ Certified Vernal Pools	<i>*Indicates Layers Set to Transparency</i>
● Install Pole	— Remove OH Line	MADEP Wetlands*	★ Potential Vernal Pools	Article 97 Lands
● Overhead Work	— Rebuild UG Conduit	MADEP Open Water*	★ NHESP Priority & Estimated Habitats	Private
● Pole Removal	— Potential Access Road	200ft Riverfront Area	★ National Grid Property	Municipal
● Pole Replacement	— Construction Mats	100ft Buffer to Wetlands & Streams	★ Parcel Boundaries	
— OH, Existing	— Work Envelope*	25ft No-Disturb Zone	— Rail Trail	
— OH, Install OH Line	— Field Delineated Intermittent Stream	FEMA 100yr Floodplain*	— Chainlink Fence	
— OH, OH Work	— Field Delineated Wetland Lines	Public Water Supply	— Wooden Fence	
— Rebuild OH Line	— Field Delineated Wetlands*	Zone II Wellhead Protection Area	— Stone Wall	

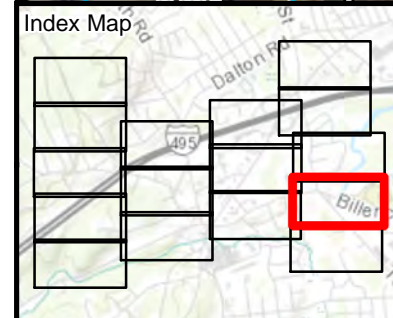


**CHELMSFORD #9 SUBSTATION & DLINE**  
**WR# 30159989 & WR# 30160035**

**Environmental Resources Map**

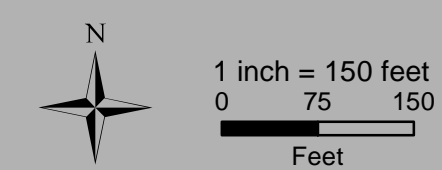
Chelmsford, MA  
 Page 14 of 16

Sources: Esri, HERE, Garmin, Intermap, increment P Corp., GEBCO, USGS, FAO, NPS, NRCAN, GeoBase, IGN, Kadaster NL, Ordnance Survey, Esri Japan, METI, Esri China (Hong Kong), (c) OpenStreetMap contributors, and the GIS User Community



**Legend**

● Existing Pole	— Reconductor OH Line	MADEP Hydrologic Connections	★ Certified Vernal Pools	<i>*Indicates Layers Set to Transparency</i>
● Install Pole	— Remove OH Line	MADEP Wetlands*	★ Potential Vernal Pools	Article 97 Lands
● Overhead Work	— Rebuild UG Conduit	MADEP Open Water*	★ NHESP Priority & Estimated Habitats	Private
● Pole Removal	— Potential Access Road	200ft Riverfront Area	★ National Grid Property	Municipal
● Pole Replacement	— Construction Mats	100ft Buffer to Wetlands & Streams	★ Parcel Boundaries	
— OH, Existing	— Work Envelope*	25ft No-Disturb Zone	— Rail Trail	
— OH, Install OH Line	— Field Delineated Intermittent Stream	FEMA 100yr Floodplain*	— Chainlink Fence	
— OH, OH Work	— Field Delineated Wetland Lines	Public Water Supply	— Wooden Fence	
— Rebuild OH Line	— Field Delineated Wetlands*	Zone II Wellhead Protection Area	— Stone Wall	

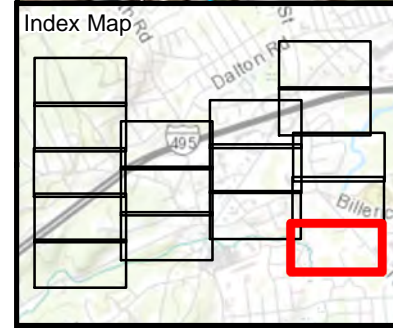


**CHELMSFORD #9 SUBSTATION & DLIN**  
**WR# 30159989 & WR# 30160035 & WR# 30318674**  
**Environmental Resources Map**

Chelmsford, MA  
 Page 15 of 16

nationalgrid  
 BSC GROUP

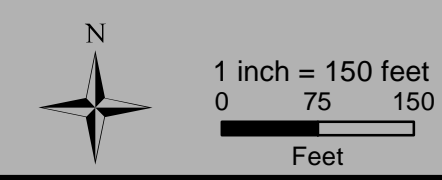
Sources: Esri, HERE, Garmin, Intermap, increment P Corp., GEBCO, USGS, FAO, NPS, NRCAN, GeoBase, IGN, Kadaster NL, Ordnance Survey, Esri Japan, METI, Esri China (Hong Kong), (c) OpenStreetMap contributors, and the GIS User Community



**Legend**

● Existing Pole	— Reconductor OH Line	— MADEP Hydrologic Connections	★ Certified Vernal Pools	■ Article 97 Lands
● Install Pole	— Remove OH Line	■ MADEP Wetlands*	★ Potential Vernal Pools	■ Private
● Overhead Work	— Rebuild UG Conduit	■ MADEP Open Water*	■ NHESP Priority & Estimated Habitats	■ Municipal
● Pole Removal	— Potential Access Road	■ 200ft Riverfront Area	■ National Grid Property	
● Pole Replacement	■ Construction Mats	■ 100ft Buffer to Wetlands & Streams	■ Parcel Boundaries	
— OH, Existing	■ Work Envelope*	■ 25ft No-Disturb Zone	— Rail Trail	
— OH, Install OH Line	— Field Delineated Intermittent Stream	■ FEMA 100yr Floodplain*	— Chainlink Fence	
— OH, OH Work	— Field Delineated Wetland Lines	■ Public Water Supply	— Wooden Fence	
— Rebuild OH Line	■ Field Delineated Wetlands*	■ Zone II Wellhead Protection Area	— Stone Wall	

*\*Indicates Layers Set to Transparency*



**CHELMSFORD #9 SUBSTATION & DLINE**  
**WR# 30159989 & WR# 30160035**

**Environmental Resources Map**

Chelmsford, MA  
 Page 16 of 16

Sources: Esri, HERE, Garmin, Intermap, increment P Corp., GEBCO, USGS, FAO, NPS, NRCAN, GeoBase, IGN, Kadaster NL, Ordnance Survey, Esri Japan, METI, Esri China (Hong Kong), (c) OpenStreetMap contributors, and the GIS User Community