

# Sandy Pond to Tewksbury Reliability Project

Ayer, Littleton, Westford, Chelmsford, Billerica & Tewksbury, MA

## Project Fact Sheet

As one of your regional electricity providers, National Grid regularly updates our systems to ensure that you receive the best possible service to your home and business every day.

The Sandy Pond to Tewksbury Reliability Project (“the Project”) will refurbish approximately 15.7 miles of 115kV overhead transmission lines and poles originally constructed in the 1950s, and 15.9 miles of 345kV overhead transmission lines and poles within the shared corridor originally constructed in the 1970s. National Grid will be investing over one hundred and forty million dollars in the Project to strengthen the region’s electrical transmission system.

### Project details:

The Project will include:

- Site preparation including necessary vegetation removal.
- Maintaining existing access and work pads
- Installing new access roads and work pads
- Replacing 115kV wood pole structures with new light duty steel H-frame & monopole structures.
- Replacing 345kV wood and steel structures with engineered steel monopole structures.
- Installing new optical ground wire (OPGW) to improve reliability and enable troubleshooting between substations.
- Installing new structure hardware and conductor

### What to expect during construction:

- **Residents can anticipate increased activity** within the Project right-of-way. This includes increased personnel presence, construction equipment throughout the Project, material deliveries to site and active construction.

### Quick Project Facts:

<b>What:</b>	Sandy Pond to Tewksbury Reliability Project
<b>Where:</b>	Ayer, Littleton, Westford, Chelmsford, Billerica & Tewksbury
<b>When:</b>	Summer 2028 - Winter 2031

### Questions, Comments, Concerns?

Please contact us:



781-236-6286

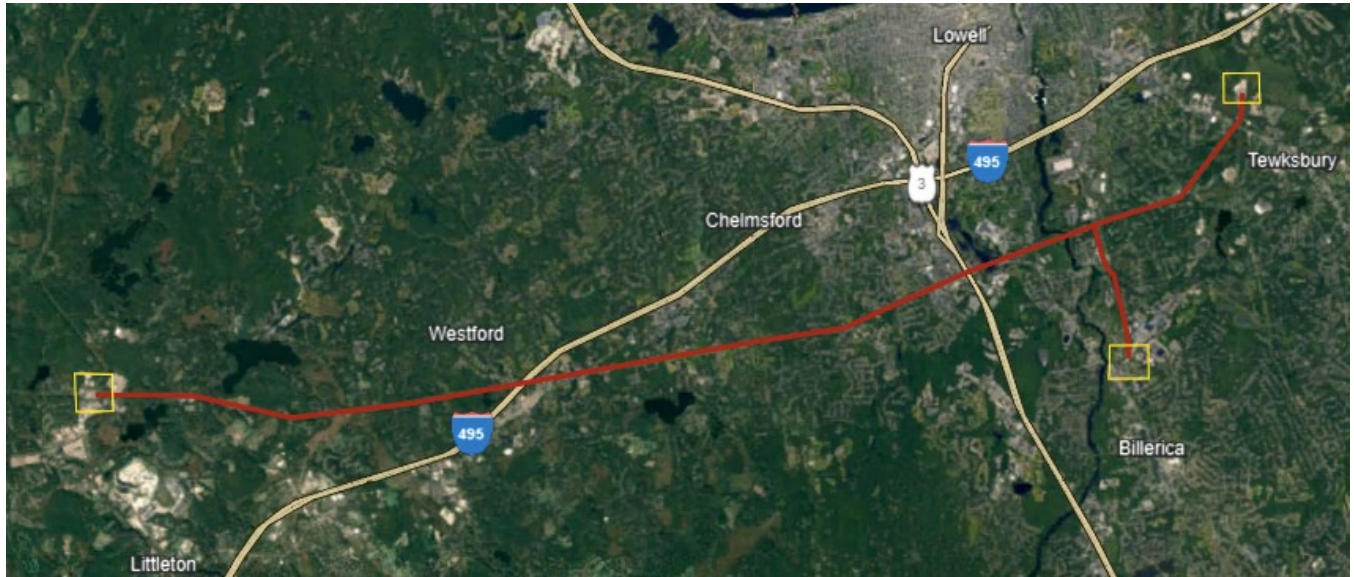


Matthew.OBrien@nationalgrid.com



Example Right-of-Way

## SANDY POND TO TEWKSBURY RELIABILITY PROJECT MAP



[NATIONALGRIDUS.COM/CONSTRUCTION-PROJECTS](https://nationalgridus.com/construction-projects)