

Customer Profile:

Nantucket Community Television, Nantucket, MA

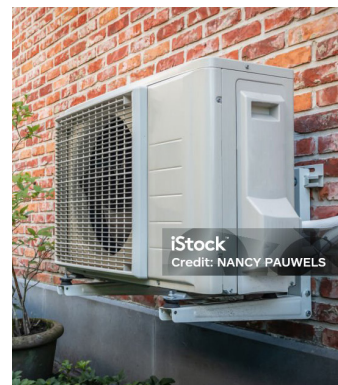


An HVAC solution that's good for their station, and good for Nantucket.

Nantucket Community Television is a local staple on the island they call home. With a small, nimble team and a commitment to covering what Nantucketer's care about most, NCTV has built a loyal local following. Its award-winning programs like "Nantucket Life" focus on the issues that matter, including the future of environmental issues, climate change, and sustainability.

The Opportunity

NCTV was growing, and they were finally in a position to accomplish what they set out to do when they moved into their space: convert their lower floor into a studio. As part of that process, they needed a heating and cooling system that would replace their propane boiler and work for their needs. But it didn't stop there. They were also considering how to heat and cool their office space in a sustainable, energy-efficient way.



NantucketTV installed the 1-ton Fujitsu Ductless Mini-split Air Source heat pump throughout offices and the main floor.

See all the possibilities
at ngrid.com/heatpumps

The Solution

Heat pumps allowed them to implement a more environmentally-friendly system that reflected the values of the Nantucket community. They outfitted their seven offices and their new studio space with the 1-ton

Fujitsu Ductless Mini-split Air Source heat pump, giving employees the flexibility to set the temperatures they want in their individual areas.



“Having individual units in each office has been a huge benefit. To be able to adjust the settings to stay comfortable without changing everyone else’s temperature has been great.”

Lisa Getter, Executive Director
of Nantucket Community TV,
Nantucket, MA

The Results

Operations at NCTV are going strong. The “Nantucket Life” series is continuing to garner attention at the national level, and they’re able to accomplish even more. The flexibility of their heat pump technology allows them to reduce the noise of their productions and even turn off the system on set to accommodate quieter programming, while still keeping employees comfortable. And with an estimated annual greenhouse gas reduction of 1.61 metric tons, they’re making newsworthy progress in energy efficiency.



1.61 METRIC TONS

decrease of
greenhouse gas emissions

23 MM BTUS

approximate annual
reduction of
energy consumption

\$25,925

of projected costs
incentivized by National Grid

Heat pump systems featuring the convenience of digital remote operation, allow for easy temperature control for maximum efficiency.

Find more information about heat pump equipment eligibility and see how you can take advantage of generous rebates.
Call 1-833-690-1284 or visit ngrid.com/heatpumps

nationalgrid